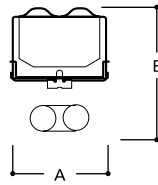
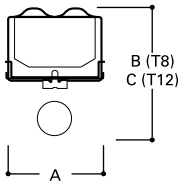


DIMENSIONS



NOMINAL LENGTH	A	B	C
18", 2', 3', 4', 6' and 8'	2-3/4" (70mm)	(T8) 3-5/8" (92mm)	(T12) 3-7/8" (98mm)
2', 4' (Biaxial)	2-3/4" (70mm)	3-1/8" (79mm)	

DESCRIPTION

The SN Series is a functional and multi-purpose narrow strip family that incorporates premium performance and construction durability. The performance and application versatility of this series can be increased by incorporating symmetrical or asymmetrical reflectors. The SN Series can be installed using various mounting methods and numerous options and accessories are available. The SN Series can be the illumination solution in commercial, industrial, institutional and retail applications. An excellent choice for storage/utility areas, coves, display cases, shops, task and general area lighting.



SN SERIES

18", 2', 3' or 4' Strip
1 or 2 Lamp

COMMERCIAL NARROW
STRIPLITE

ORDERING INFORMATION

SAMPLE NUMBER: SN-232-120V-EB81-U

Tandem Blank=2', 3' or 4' Length 4T=4' Length (Bi-axial only) 6T=6' Length 8T=8' Length SN=Series	Number of Lamps⁽³⁾ 1 or 2 lamps (Not Included) Wattage (Length) 15=15W T12 (18") 20=20W T12 (24") 17=17W T8 (24") BX40=40W Bi-axial (24") BX50=50W Bi-axial (24") BX55=55W Bi-axial (24") 30=30W T12 (36") 25=25W T8 (36") 40=40W T12 (48") 32=32W T8 (48")	Starting Type LTS=Low Trigger Start (20 Watt only) (120V only) HTS=High Trigger Start (20 Watt only) LRS=Low Rapid Start (3' or 4') (T12 only) (120V only) HRS=High Rapid Start (3' or 4') (T12 only) Voltage⁽¹⁾ 120V=120 Volt 277V=277 Volt 347V=347 Volt UNV=Universal Voltage 120-277 ⁽²⁾	Options (See Options Section) GL=Single Element Fuse GM=Double Element Fuse Emergency - for EM installed, see EM options table ⁽⁴⁾	Ballast Type⁽¹⁾ Blank=Standard Magnetic Ballast LE3=T12 Magnetic Energy Saving LEOC8=T8 Magnetic Energy Saving EB8 = T8 Electronic Instant Start. Total Harmonic Distortion < 20% No. of Ballast 1, 2 or 3 EB8_/PLUS= T8 Electronic Instant Start. High Ballast Factor >1.13. Total Harmonic Distortion < 20% No. of Ballast 1, 2 or 3 ER8 = T8 Electronic Program Rapid Start. Total Harmonic Distortion < 10% No. of Ballast 1, 2 or 3 TEB8 =T8 Electronic Instant Start. Total Harmonic Distortion < 10% No. of Ballast 1, 2 or 3 EB5 = T5 Bi-axial Electronic Instant Start. Total Harmonic Distortion < 20% No. of Ballast 1, 2 or 3 TEB5 =T5 Bi-axial Electronic Instant Start. Total Harmonic Distortion < 10% No. of Ballast 1, 2 or 3 EB2 =T12 Electronic Rapid Start. No. of Ballast 1 or 2 DLS=Digital Lighting System Dimming (For complete details on generic or to specify manufacturer's ballast see pg. 291)	Packaging U=Unit Pack 6B=6 Bulk
---	--	---	--	--	--

- Equipped with energy saving ballast/complies with federal energy efficiency standards
- Die formed channel
- End plate converts to channel aligner for continuous row mounting
- Pressure lock lampholders
- Baked enamel finish
- Easy wireway access/wireway cover removed without tools
- Numerous KO's for easy installation
- Also available in tandem 6' and 8' lengths
- UL/CUL Listed. Suitable for damp locations.

NOTES: ⁽¹⁾Products also available in non-US voltages and frequencies for international markets. ⁽²⁾Not available when specifying emergencies, voltage must be specific. ⁽³⁾2 lamps T8 only. ⁽⁴⁾Not available for 2' versions.

For complete product data, reference the Fluorescent Specification binder. Specifications & dimensions subject to change without notice. Consult your Cooper Lighting Representative for availability and ordering information.

Catalog Number	Description	UPC	STD					PRICE
			Pack	EGV	Dallas	PTC	CRA	

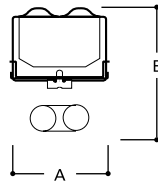
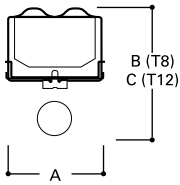


SS SERIES STANDARD STRIPLIGHT

8TSS-132-120V-EB81-U	2 LAMP, TANDEM 8' STRIP, ELECTRONIC BALLAST, T8	66240023330	1			Y		
8TSS-132-277V-EB81-U	2 LAMP, TANDEM 8' STRIP, ELECTRONIC BALLAST, T8	66240023598	1			Y		
8TSS-132-UNV-EB81-U	2 LAMP, TANDEM 8' STRIP, ELECTRONIC BALLAST, T8	66240124055	1					Y
8TSS-232-120V-EB81-4B	4 LAMP, TANDEM 8' STRIP, ELECTRONIC BALLAST, T8	66240135285	4			Y		
8TSS-232-120V-EB81-U	4 LAMP, TANDEM 8' STRIP, ELECTRONIC BALLAST, T8	66240172111	1	Y		Y	Y	
8TSS-232-277V-EB81-4B	4 LAMP, TANDEM 8' STRIP, ELECTRONIC BALLAST, T8	66240135286	4			Y		
8TSS-232-277V-EB81-U	4 LAMP, TANDEM 8' STRIP, ELECTRONIC BALLAST, T8	66240023601	1	Y		Y	Y	
8TSS-232-UNV-EB81-U	4 LAMP, TANDEM 8' STRIP, ELECTRONIC BALLAST, T8	66240019112	1					Y
8TSS-240-120V-LE3-U	4 LAMP, TANDEM 8' STRIP	66240010259	1			Y		
SS-132-120V-EB81-U	1 LAMP, 4' STRIP, ELECTRONIC BALLAST, T8	66240023329	1			Y		
SS-132-UNV-EB81-U	1 LAMP, 4' STRIP, ELECTRONIC BALLAST, T8	66240123484	1					Y
SS-132-277V-EB81-U	1 LAMP, 4' STRIP, ELECTRONIC BALLAST, T8	66240023600	1			Y		
SS-196-120V-U	1 LAMP, 8' STRIP	66240010250	1	Y		Y		
SS-220-LTS-120V-U	2 LAMP, 2' STRIP	66240010212	1	Y	Y	Y	Y	Y
SS-225-120V-EB81-U	2 LAMP, 3' STRIP, ELECTRONIC BALLAST, T8	66240138921	1			Y		
SS-225-277V-EB81-U	2 LAMP, 3' STRIP, ELECTRONIC BALLAST, T8	66240171862	1			Y		
SS-225-UNV-EB81-U	2 LAMP, 3' STRIP, ELECTRONIC BALLAST, T8	66240121171	1					Y
SS-230-120V-U	2 LAMP, 3' STRIP	66240010214	1	Y		Y		Y
SS-232-120V-EB81-4B	2 LAMP, 4' STRIP, ELECTRONIC BALLAST, T8	66240146839	4			Y		
SS-232-120V-EB81-6B	2 LAMP, 4' STRIP, ELECTRONIC BALLAST, T8	66240135273	6			Y		
SS-232-120V-EB81-U	2 LAMP, 4' STRIP, ELECTRONIC BALLAST, T8	66240023429	1	Y	Y	Y	Y	
SS-232-277V-EB81-6B	2 LAMP, 4' STRIP, ELECTRONIC BALLAST, T8	66240135274	6			Y		
SS-232-277V-EB81-U	2 LAMP, 4' STRIP, ELECTRONIC BALLAST, T8	66240023019	1	Y	Y	Y	Y	
SS-232-UNV-EB81-U	2 LAMP, 4' STRIP, ELECTRONIC BALLAST, T8	66240119138	1					Y
SS-240-120V-AD-RL234TP-U	2 LAMP, 4' STRIP, RESIDENTIAL BALLAST	66240107776	1					Y
SS-240-120V-AD-RM2S35TP-U	2 LAMP, 4' STRIP, RESIDENTIAL BALLAST	66240101203	1					Y
SS-240-120V-LE3-6B	2 LAMP, 4' STRIP	66240135277	6			Y		
SS-240-120V-LE3-U	2 LAMP, 4' STRIP	66240135276	1	Y	Y	Y	Y	Y
SS-240-120V-Z-U	2 LAMP, 4' STRIP, COLD WEATHER BALLAST	66240010230	1			Y		
SS-240-277V-LE3-U	2 LAMP, 4' STRIP	66240010240	1		Y	Y		
SS-296-120V-EB81-4B	2 LAMP, 8' STRIP, ELECTRONIC BALLAST, T8	66240023864	4			Y		
SS-296-120V-EB81-U	2 LAMP, 8' STRIP, ELECTRONIC BALLAST, T8	66240023533	1	Y	Y	Y		Y
SS-296-120V-LE3-2B	2 LAMP, 8' STRIP	66240010266	2			Y		
SS-296-120V-LE3-4B	2 LAMP, 8' STRIP	66240010264	4			Y		
SS-296-120V-LE3-U	2 LAMP, 8' STRIP	66240010265	1	Y	Y	Y	Y	Y
SS-296-120V-Z-U	2 LAMP, 8' STRIP, COLD WEATHER BALLAST	66240011350	1			Y		
SS-296-277V-EB81-4B	2 LAMP, 8' STRIP, ELECTRONIC BALLAST, T8	66240163355	4			Y		
SS-296-277V-EB81-U	2 LAMP, 8' STRIP, ELECTRONIC BALLAST, T8	66240023536	1	Y	Y	Y		Y
SS-296-277V-LE3-U	2 LAMP, 8' STRIP	66240010273	1	Y	Y	Y		Y
XP-SS-296-120V-UN-820-U	2 LAMP, 8' STRIP, EXPORT BALLAST	66240181641	1					Y
XP2-SS-240-120V-U	2 LAMP, 4' STRIP, EXPORT BALLAST	66240182468	1					Y



DIMENSIONS



NOMINAL LENGTH	A	B	C
18", 2', 3', 4', 6' and 8'	2-3/4" (70mm)	(T8) 3-5/8" (92mm)	(T12) 3-7/8" (98mm)
2', 4' (Bi axial)	2-3/4" (70mm)	3-1/8" (79mm)	

DESCRIPTION

The SN Series is a functional and multi-purpose narrow strip family that incorporates premium performance and construction durability. The performance and application versatility of this series can be increased by incorporating symmetrical or asymmetrical reflectors. The SN Series can be installed using various mounting methods and numerous options and accessories are available. The SN Series can be the illumination solution in commercial, industrial, institutional and retail applications. An excellent choice for storage/utility areas, coves, display cases, shops, task and general area lighting.



SN SERIES

18", 2', 3' or 4' Strip
1 or 2 Lamp

COMMERCIAL NARROW
STRIPLITE

ORDERING INFORMATION

SAMPLE NUMBER: SN-232-120V-EB81-U

Tandem Blank=2', 3' or 4' Length 4T=4' Length (Bi axial only) 6T=6' Length 8T=8' Length SN=Series	Number of Lamps⁽³⁾ 1 or 2 lamps (Not Included) Wattage (Length) 15=15W T12 (18") 20=20W T12 (24") 17=17W T8 (24") BX40=40W Bi axial (24") BX50=50W Bi axial (24") BX55=55W Bi axial (24") 30=30W T12 (36") 25=25W T8 (36") 40=40W T12 (48") 32=32W T8 (48")	Starting Type LTS=Low Trigger Start (20 Watt only) (120V only) HTS=High Trigger Start (20 Watt only) LRS=Low Rapid Start (3' or 4') (T12 only) (120V only) HRS=High Rapid Start (3' or 4') (T12 only) Voltage⁽¹⁾ 120V=120 Volt 277V=277 Volt 347V=347 Volt UNV=Universal Voltage 120-277 ⁽²⁾	Options (See Options Section) GL=Single Element Fuse GM=Double Element Fuse Emergency - for EM installed, see EM options table ⁽⁴⁾	Ballast Type⁽¹⁾ Blank=Standard Magnetic Ballast LE3=T12 Magnetic Energy Saving LEOC8=T8 Magnetic Energy Saving EB8 = T8 Electronic Instant Start. Total Harmonic Distortion < 20% No. of Ballast 1, 2 or 3 EB8_/PLUS= T8 Electronic Instant Start. High Ballast Factor >1.13. Total Harmonic Distortion < 20% No. of Ballast 1, 2 or 3 ER8 = T8 Electronic Program Rapid Start. Total Harmonic Distortion < 10% No. of Ballast 1, 2 or 3 TEB8 =T8 Electronic Instant Start. Total Harmonic Distortion < 10% No. of Ballast 1, 2 or 3 EB5 = T5 Bi axial Electronic Instant Start. Total Harmonic Distortion < 20% No. of Ballast 1, 2 or 3 TEB5 =T5 Bi axial Electronic Instant Start. Total Harmonic Distortion < 10% No. of Ballast 1, 2 or 3 EB2 =T12 Electronic Rapid Start. No. of Ballast 1 or 2 DLS=Digital Lighting System Dimming (For complete details on generic or to specify manufacturer's ballast see pg. 291)	Packaging U=Unit Pack 6B=6 Bulk
---	--	---	--	---	--

NOTES: ⁽¹⁾Products also available in non-US voltages and frequencies for international markets. ⁽²⁾Not available when specifying emergencies, voltage must be specific. ⁽³⁾2 lamps T8 only. ⁽⁴⁾Not available for 2' versions.

For complete product data, reference the Fluorescent Specification binder. Specifications & dimensions subject to change without notice. Consult your Cooper Lighting Representative for availability and ordering information.

- Equipped with energy saving ballast/complies with federal energy efficiency standards
- Die formed channel
- End plate converts to channel aligner for continuous row mounting
- Pressure lock lampholders
- Baked enamel finish
- Easy wireway access/wireway cover removed without tools
- Numerous KO's for easy installation
- Also available in tandem 6' and 8' lengths
- UL/CUL Listed. Suitable for damp locations.

Catalog Number	Description	UPC	STD					PRICE
			Pack	EGV	Dallas	PTC	CRA	



SS SERIES STANDARD STRIPLIGHT

8TSS-132-120V-EB81-U	2 LAMP, TANDEM 8' STRIP, ELECTRONIC BALLAST, T8	66240023330	1			Y		
8TSS-132-277V-EB81-U	2 LAMP, TANDEM 8' STRIP, ELECTRONIC BALLAST, T8	66240023598	1			Y		
8TSS-132-UNV-EB81-U	2 LAMP, TANDEM 8' STRIP, ELECTRONIC BALLAST, T8	66240124055	1					Y
8TSS-232-120V-EB81-4B	4 LAMP, TANDEM 8' STRIP, ELECTRONIC BALLAST, T8	66240135285	4			Y		
8TSS-232-120V-EB81-U	4 LAMP, TANDEM 8' STRIP, ELECTRONIC BALLAST, T8	66240172111	1	Y		Y	Y	
8TSS-232-277V-EB81-4B	4 LAMP, TANDEM 8' STRIP, ELECTRONIC BALLAST, T8	66240135286	4			Y		
8TSS-232-277V-EB81-U	4 LAMP, TANDEM 8' STRIP, ELECTRONIC BALLAST, T8	66240023601	1	Y		Y	Y	
8TSS-232-UNV-EB81-U	4 LAMP, TANDEM 8' STRIP, ELECTRONIC BALLAST, T8	66240019112	1					Y
8TSS-240-120V-LE3-U	4 LAMP, TANDEM 8' STRIP	66240010259	1			Y		
SS-132-120V-EB81-U	1 LAMP, 4' STRIP, ELECTRONIC BALLAST, T8	66240023329	1			Y		
SS-132-UNV-EB81-U	1 LAMP, 4' STRIP, ELECTRONIC BALLAST, T8	66240123484	1					Y
SS-132-277V-EB81-U	1 LAMP, 4' STRIP, ELECTRONIC BALLAST, T8	66240023600	1			Y		
SS-196-120V-U	1 LAMP, 8' STRIP	66240010250	1	Y		Y		
SS-220-LTS-120V-U	2 LAMP, 2' STRIP	66240010212	1	Y	Y	Y	Y	Y
SS-225-120V-EB81-U	2 LAMP, 3' STRIP, ELECTRONIC BALLAST, T8	66240138921	1			Y		
SS-225-277V-EB81-U	2 LAMP, 3' STRIP, ELECTRONIC BALLAST, T8	66240171862	1			Y		
SS-225-UNV-EB81-U	2 LAMP, 3' STRIP, ELECTRONIC BALLAST, T8	66240121171	1					Y
SS-230-120V-U	2 LAMP, 3' STRIP	66240010214	1	Y		Y		Y
SS-232-120V-EB81-4B	2 LAMP, 4' STRIP, ELECTRONIC BALLAST, T8	66240146839	4			Y		
SS-232-120V-EB81-6B	2 LAMP, 4' STRIP, ELECTRONIC BALLAST, T8	66240135273	6			Y		
SS-232-120V-EB81-U	2 LAMP, 4' STRIP, ELECTRONIC BALLAST, T8	66240023429	1	Y	Y	Y	Y	
SS-232-277V-EB81-6B	2 LAMP, 4' STRIP, ELECTRONIC BALLAST, T8	66240135274	6			Y		
SS-232-277V-EB81-U	2 LAMP, 4' STRIP, ELECTRONIC BALLAST, T8	66240023019	1	Y	Y	Y	Y	
SS-232-UNV-EB81-U	2 LAMP, 4' STRIP, ELECTRONIC BALLAST, T8	66240119138	1					Y
SS-240-120V-AD-RL234TP-U	2 LAMP, 4' STRIP, RESIDENTIAL BALLAST	66240107776	1					Y
SS-240-120V-AD-RM2S35TP-U	2 LAMP, 4' STRIP, RESIDENTIAL BALLAST	66240101203	1					Y
SS-240-120V-LE3-6B	2 LAMP, 4' STRIP	66240135277	6			Y		
SS-240-120V-LE3-U	2 LAMP, 4' STRIP	66240135276	1	Y	Y	Y	Y	Y
SS-240-120V-Z-U	2 LAMP, 4' STRIP, COLD WEATHER BALLAST	66240010230	1			Y		
SS-240-277V-LE3-U	2 LAMP, 4' STRIP	66240010240	1		Y	Y		
SS-296-120V-EB81-4B	2 LAMP, 8' STRIP, ELECTRONIC BALLAST, T8	66240023864	4			Y		
SS-296-120V-EB81-U	2 LAMP, 8' STRIP, ELECTRONIC BALLAST, T8	66240023533	1	Y	Y	Y		Y
SS-296-120V-LE3-2B	2 LAMP, 8' STRIP	66240010266	2			Y		
SS-296-120V-LE3-4B	2 LAMP, 8' STRIP	66240010264	4			Y		
SS-296-120V-LE3-U	2 LAMP, 8' STRIP	66240010265	1	Y	Y	Y	Y	Y
SS-296-120V-Z-U	2 LAMP, 8' STRIP, COLD WEATHER BALLAST	66240011350	1			Y		
SS-296-277V-EB81-4B	2 LAMP, 8' STRIP, ELECTRONIC BALLAST, T8	66240163355	4			Y		
SS-296-277V-EB81-U	2 LAMP, 8' STRIP, ELECTRONIC BALLAST, T8	66240023536	1	Y	Y	Y		Y
SS-296-277V-LE3-U	2 LAMP, 8' STRIP	66240010273	1	Y	Y	Y		Y
XP-SS-296-120V-UN-820-U	2 LAMP, 8' STRIP, EXPORT BALLAST	66240181641	1					Y
XP2-SS-240-120V-U	2 LAMP, 4' STRIP, EXPORT BALLAST	66240182468	1					Y

