

## Service Post Connectors

For grounding of steel structures, fence posts or transformers using one or two cables.

### Service Post Connectors

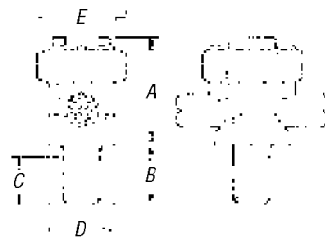
- For copper-to-copper connections
- For tapping one or two cables from bus bar
- Hex design bolts machined from high-conductivity bronze alloy
- Nuts and pressure bars cold-formed from high-strength copper or copper alloy
- Available in sizes for #12 – 500 kcmil stranded and #12 – #2 solid copper conductor
- Available in both single- and double-conductor versions
- UL® 486A and UL® 467 Listed



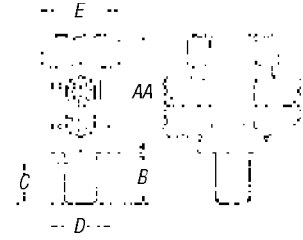
Short Stud



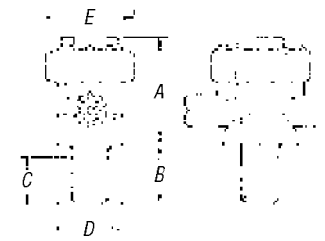
Long Stud



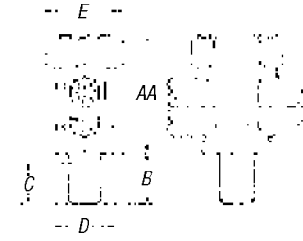
Single-Conductor Short Stud



Double-Conductor Short Stud



Single-Conductor Long Stud



Double-Conductor Long Stud

#### Single- and Double-Conductor Service Post Connectors, Short Stud



CAT. NO.	CONDUCTOR RANGE				DIAMETER RANGE (IN.)	STUD SIZE	
	AWG		MM <sup>2</sup>				
SP-DS	SP-SS	MAX.	MIN.	MAX.	MIN.		
SP0DS	SP0SS	8	12	8	12	.146-.081	¼-20 x ½
		6mm <sup>2</sup>	4mm <sup>2</sup>	10mm <sup>2</sup>	4mm <sup>2</sup>	—	
SP1DS	SP1SS	7	10	6	10	.164-.102	¼-20 x ½
		10mm <sup>2</sup>	6mm <sup>2</sup>	10mm <sup>2</sup>	6mm <sup>2</sup>	—	
SP2DS	SP2SS	5	10	4	10	.206-.102	⅝-18 x ⅜
		16mm <sup>2</sup>	6mm <sup>2</sup>	—	—	—	
SP3DS	SP3SS	3	10	2	10	.26-.102	⅝-16 x ⅜
		25mm <sup>2</sup>	6mm <sup>2</sup>	—	—	—	
SP4DS	SP4SS	1	8	2	8	.332-.129	⅝-16 x ⅜
		35mm <sup>2</sup>	10mm <sup>2</sup>	—	—	—	
SP5DS	SP5SS	1/0	2	1/0	2	.373-.258	½-13 x ¾
		50mm <sup>2</sup>	35mm <sup>2</sup>	—	—	—	
SP6DS	SP6SS	2/0	2	2/0	2	.419-.258	½-13 x ¾
		50mm <sup>2</sup>	35mm <sup>2</sup>	—	—	—	
SP8DS	SP8SS	4/0	2	4/0	1	.528-.289	⅝-11 x 1
		95mm <sup>2</sup>	35mm <sup>2</sup>	—	—	—	
SP9DS	SP9SS	350	1/0	—	—	.681-.373	⅝-11 x 1
		150mm <sup>2</sup>	50mm <sup>2</sup>	—	—	—	
SP10DS	SP10SS	500	3/0	—	—	.814-.47	¾-10 x 1¼
		240mm <sup>2</sup>	95mm <sup>2</sup>	—	—	—	

#### Single- and Double-Conductor Service Post Connectors, Long Stud



CAT. NO.	CONDUCTOR RANGE				DIAMETER RANGE (IN.)	STUD SIZE	
	AWG		MM <sup>2</sup>				
SP-SL	SP-DL	MAX.	MIN.	MAX.	MIN.		
SP0SL	SP0DL	8	12	8	12	.146-.081	¼-20 x 1
		6mm <sup>2</sup>	4mm <sup>2</sup>	10mm <sup>2</sup>	4mm <sup>2</sup>	—	
SP1SL	SP1DL	7	10	6	10	.164-.102	¼-20 x 1
		10mm <sup>2</sup>	6mm <sup>2</sup>	10mm <sup>2</sup>	6mm <sup>2</sup>	—	
SP2SL	SP2DL	5	10	4	10	.206-.102	⅝-18 x 1
		16mm <sup>2</sup>	6mm <sup>2</sup>	—	—	—	
SP3SL	SP3DL	3	10	2	10	.26-.102	⅝-16 x 1¼
		25mm <sup>2</sup>	6mm <sup>2</sup>	—	—	—	
SP4SL	SP4DL	1	8	2	8	.332-.129	⅝-16 x 1¼
		35mm <sup>2</sup>	10mm <sup>2</sup>	—	—	—	
SP5SL	SP5DL	1/0	2	1/0	2	.373-.258	½-13 x 1¼
		50mm <sup>2</sup>	35mm <sup>2</sup>	—	—	—	
SP6SL	SP6DL	2/0	2	2/0	2	.419-.258	½-13 x 1¼
		50mm <sup>2</sup>	35mm <sup>2</sup>	—	—	—	
SP8SL	SP8DL	4/0	2	4/0	1	.528-.289	⅝-11 x 1¼
		95mm <sup>2</sup>	35mm <sup>2</sup>	—	—	—	
SP9SL	SP9DL	350	1/0	—	—	.681-.373	⅝-11 x 1¼
		150mm <sup>2</sup>	50mm <sup>2</sup>	—	—	—	
SP10SL	SP10DL	500	3/0	—	—	.814-.47	¾-10 x 1¼
		240mm <sup>2</sup>	95mm <sup>2</sup>	—	—	—	

## Service Post Connectors

For grounding of steel structures, fence posts or transformers using one or two cables.

### Service Post Connectors

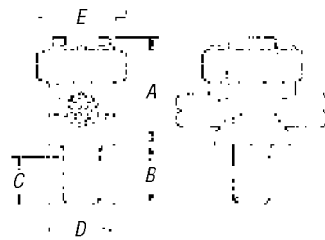
- For copper-to-copper connections
- For tapping one or two cables from bus bar
- Hex design bolts machined from high-conductivity bronze alloy
- Nuts and pressure bars cold-formed from high-strength copper or copper alloy
- Available in sizes for #12 – 500 kcmil stranded and #12 – #2 solid copper conductor
- Available in both single- and double-conductor versions
- UL® 486A and UL® 467 Listed



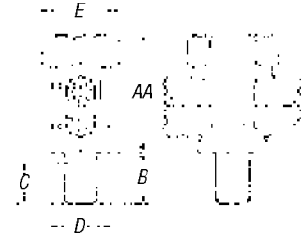
Short Stud



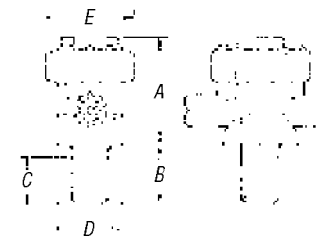
Long Stud



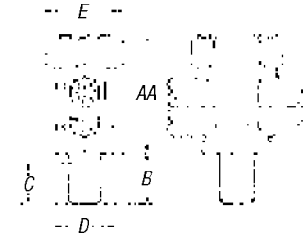
Single-Conductor Short Stud



Double-Conductor Short Stud



Single-Conductor Long Stud



Double-Conductor Long Stud

#### Single- and Double-Conductor Service Post Connectors, Short Stud



CAT. NO.	CONDUCTOR RANGE				DIAMETER RANGE (IN.)	STUD SIZE
	STRANDED		SOLID			
SP-DS	SP-SS	MAX. AWG	MIN. MM <sup>2</sup>	MAX. AWG	MIN. MM <sup>2</sup>	
SP0DS	SP0SS	8	12	8	12	.146-.081 ¼-20 x ½
		6mm <sup>2</sup>	4mm <sup>2</sup>	10mm <sup>2</sup>	4mm <sup>2</sup>	—
SP1DS	SP1SS	7	10	6	10	.164-.102 ¼-20 x ½
		10mm <sup>2</sup>	6mm <sup>2</sup>	10mm <sup>2</sup>	6mm <sup>2</sup>	—
SP2DS	SP2SS	5	10	4	10	.206-.102 ⅝-18 x ⅜
		16mm <sup>2</sup>	6mm <sup>2</sup>	—	—	—
SP3DS	SP3SS	3	10	2	10	.26-.102 ⅝-16 x ⅝
		25mm <sup>2</sup>	6mm <sup>2</sup>	—	—	—
SP4DS	SP4SS	1	8	2	8	.332-.129 ⅝-16 x ⅝
		35mm <sup>2</sup>	10mm <sup>2</sup>	—	—	—
SP5DS	SP5SS	1/0	2	1/0	2	.373-.258 ½-13 x ¾
		50mm <sup>2</sup>	35mm <sup>2</sup>	—	—	—
SP6DS	SP6SS	2/0	2	2/0	2	.419-.258 ½-13 x ¾
		50mm <sup>2</sup>	35mm <sup>2</sup>	—	—	—
SP8DS	SP8SS	4/0	2	4/0	1	.528-.289 ⅝-11 x 1
		95mm <sup>2</sup>	35mm <sup>2</sup>	—	—	—
SP9DS	SP9SS	350	1/0	—	—	.681-.373 ⅝-11 x 1
		150mm <sup>2</sup>	50mm <sup>2</sup>	—	—	—
SP10DS	SP10SS	500	3/0	—	—	.814-.47 ¾-10 x 1¼
		240mm <sup>2</sup>	95mm <sup>2</sup>	—	—	—

#### Single- and Double-Conductor Service Post Connectors, Long Stud



CAT. NO.	CONDUCTOR RANGE				DIAMETER RANGE (IN.)	STUD SIZE
	STRANDED		SOLID			
SP-SL	SP-DL	MAX. AWG	MIN. MM <sup>2</sup>	MAX. AWG	MIN. MM <sup>2</sup>	
SP0SL	SP0DL	8	12	8	12	.146-.081 ¼-20 x 1
		6mm <sup>2</sup>	4mm <sup>2</sup>	10mm <sup>2</sup>	4mm <sup>2</sup>	—
SP1SL	SP1DL	7	10	6	10	.164-.102 ¼-20 x 1
		10mm <sup>2</sup>	6mm <sup>2</sup>	10mm <sup>2</sup>	6mm <sup>2</sup>	—
SP2SL	SP2DL	5	10	4	10	.206-.102 ⅝-18 x 1
		16mm <sup>2</sup>	6mm <sup>2</sup>	—	—	—
SP3SL	SP3DL	3	10	2	10	.26-.102 ⅝-16 x 1⅝
		25mm <sup>2</sup>	6mm <sup>2</sup>	—	—	—
SP4SL	SP4DL	1	8	2	8	.332-.129 ⅝-16 x 1⅝
		35mm <sup>2</sup>	10mm <sup>2</sup>	—	—	—
SP5SL	SP5DL	1/0	2	1/0	2	.373-.258 ½-13 x 1¼
		50mm <sup>2</sup>	35mm <sup>2</sup>	—	—	—
SP6SL	SP6DL	2/0	2	2/0	2	.419-.258 ½-13 x 1¼
		50mm <sup>2</sup>	35mm <sup>2</sup>	—	—	—
SP8SL	SP8DL	4/0	2	4/0	1	.528-.289 ⅝-11 x 1⅝
		95mm <sup>2</sup>	35mm <sup>2</sup>	—	—	—
SP9SL	SP9DL	350	1/0	—	—	.681-.373 ⅝-11 x 1⅝
		150mm <sup>2</sup>	50mm <sup>2</sup>	—	—	—
SP10SL	SP10DL	500	3/0	—	—	.814-.47 ¾-10 x 1¼
		240mm <sup>2</sup>	95mm <sup>2</sup>	—	—	—