

Gold Seal Strain Relief Connectors

Type SR

Straight Connector

Features:

- Tapered threaded male hub NPT
- Watertight/Oiltight
- UL Listed NEMA 4 & 6 when installed into a NPT threaded entry or UL Listed conduit hub (sizes 1¼" and larger require thread sealant).
- Rated at 90°C

Material/Finish:

Malleable Iron/Zinc Plated

- PVC grommets

Third Party Certification:



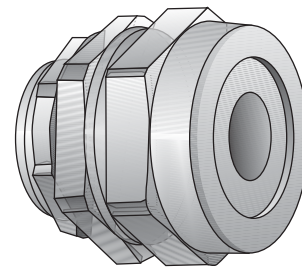
UL Listed: E-11857



CSA Certified: 009795

Note:

1. Gold Seal connectors available with insulated throat. Add suffix "T". Example: SR-502T. Contact your local representative for price and availability.
2. For multi-hole applications, contact your local representative for price and availability.



Type SR-502

Catalog Number	Cable Range (in.)		Hub Size (inches)	Throat I.D.	Dimensions in Inches		
	Dia. Over Jacket Min.	Max.			Body Length	Thread Length	Max. Dia.
SR-502†	.100 -	.200	½	.52	1⅞	⅞	1⅞
SR-503†	.200 -	.300	½	.52	1⅞	⅞	1⅞
SR-504†	.300 -	.400	½	.52	1⅞	⅞	1⅞
SR-505†	.400 -	.500	½	.61	1⅞	⅞	1⅞
SR-506†	.500 -	.600	½	.61	1⅞	⅞	1⅞
•SR-507†	.600 -	.700	½	.61	1⅞	⅞	1⅞
SR-752	.100 -	.200	¾	.76	1⅞	⅞	1⅞
SR-753	.200 -	.300	¾	.76	1⅞	⅞	1⅞
SR-754†	.300 -	.400	¾	.76	1⅞	⅞	1⅞
SR-755†	.400 -	.500	¾	.76	1⅞	⅞	1⅞
SR-756†	.500 -	.600	¾	.76	1⅞	⅞	1⅞
SR-757†	.600 -	.700	¾	.76	1⅞	⅞	1⅞
SR-758†	.700 -	.800	¾	.80	1¼	⅞	1⅞
•SR-759†	.800 -	.900	¾	.80	1¼	⅞	1⅞
•SR-7510†	.900 -	1.000	¾	.80	1¼	⅞	1⅞
SR-1002	.100 -	.200	1	.96	1¼	⅞	1⅞
SR-1003	.200 -	.300	1	.96	1¼	⅞	1⅞
SR-1004	.300 -	.400	1	.96	1¼	⅞	1⅞
SR-1005	.400 -	.500	1	.96	1¼	⅞	1⅞
SR-1006†	.500 -	.600	1	.96	1¼	⅞	1⅞
SR-1007†	.600 -	.700	1	.96	1¼	⅞	1⅞
SR-1008†	.700 -	.800	1	.96	1¼	⅞	1⅞
SR-1009†	.800 -	.900	1	.96	1¼	⅞	1⅞
•SR-10010†	.900 -	1.000	1	.96	1¼	⅞	1⅞
•SR-10012†	1.000 -	1.200	1	.96	1⅞	⅞	1⅞
SR-12510†	.900 -	1.000	1¼	1.20	1⅞	⅞	2⅞
SR-12512†	1.000 -	1.200	1¼	1.20	1⅞	⅞	2⅞
•SR-12514†	1.200 -	1.400	1¼	1.22	1⅞	⅞	2⅞
SR-15012†	1.000 -	1.200	1½	1.50	1⅞	⅞	2⅞
SR-15014†	1.200 -	1.400	1½	1.50	1⅞	⅞	2⅞
•SR-15016†	1.400 -	1.600	1½	1.56	1⅞	⅞	3
•SR-15018†	1.600 -	1.800	1½	1.56	1⅞	⅞	3
SR-20014†	1.200 -	1.400	2	1.93	2⅞	⅞	3
SR-20016†	1.400 -	1.600	2	1.93	2⅞	⅞	3
SR-20018†	1.600 -	1.800	2	1.93	2⅞	⅞	3
SR-25018†	1.500 -	1.800	2½	2.44	2½	1⅞	4⅞
SR-25021†	1.800 -	2.100	2½	2.44	2½	1⅞	4⅞
SR-25024†	2.100 -	2.400	2½	2.44	2½	1⅞	4⅞
SR-30018†	1.500 -	1.800	3	2.44	2½	1⅞	4⅞
SR-30021†	1.800 -	2.100	3	2.44	2½	1⅞	4⅞
SR-30024†	2.100 -	2.400	3	2.44	2½	1⅞	4⅞

*Remove enough jacket to get conductors through Throat I.D.

†UL Listed NEMA 4, 6 & 12 when installed into a NPT threaded entry or UL Listed conduit hub.

Gold Seal Strain Relief Connectors

Type SR

Straight Connector

Features:

- Tapered threaded male hub NPT
- Watertight/Oiltight
- UL Listed NEMA 4 & 6 when installed into a NPT threaded entry or UL Listed conduit hub (sizes 1¼" and larger require thread sealant).
- Rated at 90°C

Material/Finish:

Malleable Iron/Zinc Plated

- PVC grommets

Third Party Certification:



UL Listed: E-11857



CSA Certified: 009795

Note:

1. Gold Seal connectors available with insulated throat. Add suffix "T". Example: SR-502T. Contact your local representative for price and availability.
2. For multi-hole applications, contact your local representative for price and availability.



Type SR-502

Catalog Number	Cable Range (in.)		Hub Size (inches)	Throat I.D.	Dimensions in Inches		
	Dia. Over Jacket Min.	Max.			Body Length	Thread Length	Max. Dia.
SR-502†	.100 - .200		½	.52	1⅞	⅞	1⅞
SR-503†	.200 - .300		½	.52	1⅞	⅞	1⅞
SR-504†	.300 - .400		½	.52	1⅞	⅞	1⅞
SR-505†	.400 - .500		½	.61	1⅞	⅞	1⅞
SR-506†	.500 - .600		½	.61	1⅞	⅞	1⅞
•SR-507†	.600 - .700		½	.61	1⅞	⅞	1⅞
SR-752	.100 - .200		¾	.76	1⅞	⅞	1⅞
SR-753	.200 - .300		¾	.76	1⅞	⅞	1⅞
SR-754†	.300 - .400		¾	.76	1⅞	⅞	1⅞
SR-755†	.400 - .500		¾	.76	1⅞	⅞	1⅞
SR-756†	.500 - .600		¾	.76	1⅞	⅞	1⅞
SR-757†	.600 - .700		¾	.76	1⅞	⅞	1⅞
SR-758†	.700 - .800		¾	.80	1¼	⅞	1⅞
•SR-759†	.800 - .900		¾	.80	1¼	⅞	1⅞
•SR-7510†	.900 - 1.000		¾	.80	1¼	⅞	1⅞
SR-1002	.100 - .200		1	.96	1¼	⅞	1⅞
SR-1003	.200 - .300		1	.96	1¼	⅞	1⅞
SR-1004	.300 - .400		1	.96	1¼	⅞	1⅞
SR-1005	.400 - .500		1	.96	1¼	⅞	1⅞
SR-1006†	.500 - .600		1	.96	1¼	⅞	1⅞
SR-1007†	.600 - .700		1	.96	1¼	⅞	1⅞
SR-1008†	.700 - .800		1	.96	1¼	⅞	1⅞
SR-1009†	.800 - .900		1	.96	1¼	⅞	1⅞
•SR-10010†	.900 - 1.000		1	.96	1¼	⅞	1⅞
•SR-10012†	1.000 - 1.200		1	.96	1⅞	⅞	1⅞
SR-12510†	.900 - 1.000		1¼	1.20	1⅞	⅞	2⅞
SR-12512†	1.000 - 1.200		1¼	1.20	1⅞	⅞	2⅞
•SR-12514†	1.200 - 1.400		1¼	1.22	1⅞	⅞	2⅞
SR-15012†	1.000 - 1.200		1½	1.50	1⅞	⅞	2⅞
SR-15014†	1.200 - 1.400		1½	1.50	1⅞	⅞	2⅞
•SR-15016†	1.400 - 1.600		1½	1.56	1⅞	⅞	3
•SR-15018†	1.600 - 1.800		1½	1.56	1⅞	⅞	3
SR-20014†	1.200 - 1.400		2	1.93	2⅞	⅞	3
SR-20016†	1.400 - 1.600		2	1.93	2⅞	⅞	3
SR-20018†	1.600 - 1.800		2	1.93	2⅞	⅞	3
SR-25018†	1.500 - 1.800		2½	2.44	2½	1⅞	4⅞
SR-25021†	1.800 - 2.100		2½	2.44	2½	1⅞	4⅞
SR-25024†	2.100 - 2.400		2½	2.44	2½	1⅞	4⅞
SR-30018†	1.500 - 1.800		3	2.44	2½	1⅞	4⅞
SR-30021†	1.800 - 2.100		3	2.44	2½	1⅞	4⅞
SR-30024†	2.100 - 2.400		3	2.44	2½	1⅞	4⅞

*Remove enough jacket to get conductors through Throat I.D.

†UL Listed NEMA 4, 6 & 12 when installed into a NPT threaded entry or UL Listed conduit hub.