

# SSA SERIES

## DIGITAL AUTO OFF IN-WALL TIME SWITCH



### APPLICATIONS



- Offices, meeting rooms, library aisles
- Stock and equipment rooms
- Exhaust fans – work areas, utility rooms, bathrooms
- Hot tub heaters and circulating pumps
- Timed override lighting and HVAC for after hours and for loads controlled by electromechanical or digital time switches.

### FEATURES

**8-IN-1 TIMING:** Choose from 8 preset ON intervals.

**MANUAL SCROLL-UP:** Option allows adjustment in 10 minute intervals.

**FLASH WARNING:** Optional flicker feature turns load off for 1 second, 2 minutes before end of timed cycle and again 1 minute before end of timed cycle.

**AUDIBLE WARNING:** Optional beep will sound every 12 seconds during the last 2 minutes of timed cycle.

**TAMPER RESISTANT:** Time ON interval preset hidden behind wall plate.

**EASY SET:** Dip switches provide quick set-up of timing and options.

**EASY WIRING:** No neutral needed, great for retrofit.

**BACKLIT DISPLAY:** Numerical read-out of time remaining includes graphic bar showing time remaining in 10% increments. Stands out strongly in lighted and dark areas.

**WALL PLATE:** Supplied with white standard single gang decorator wall plate.

**SSA-R24:** Offers low voltage control with SPDT output and includes momentary input.

### SPECIFICATIONS

**TIMING ACCURACY:** .002%.

**INPUT VOLTAGE:**  
120/277 VAC, 50/60Hz.

**WIRE SIZE:** #18AWG.

**OPERATING TEMPERATURE:**  
0°F to +100°F (-17°C to +37°C).

### ORDERING INFO

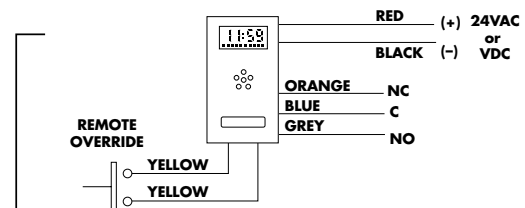
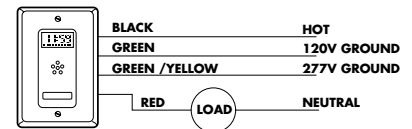
CATALOG NO.	UPC CODE	INPUT SUPPLY	TIME SETTINGS	OUTPUT CONTACTS
SSA100	14010	120/277 VAC	Minutes: 5, 15, 30 Hours: 1, 3, 6, 9, 12	SPST
SSA200	14011	120/277 VAC	Minutes: 10, 20, 40 Hours: 1, 1½, 2, 4, 8	SPST
SSA100R-24	14014	24VAC/24VDC	Minutes: 5, 15, 30 Hours: 1, 3, 6, 9, 12	SPDT
SSA200R-24	14015	24VAC/24VDC	Minutes: 10, 20, 40 Hours: 1, 1½, 2, 4, 8	SPDT
LCS115M	82082		Momentary Switch for Override (white)	SPST

### CONTACT RATINGS

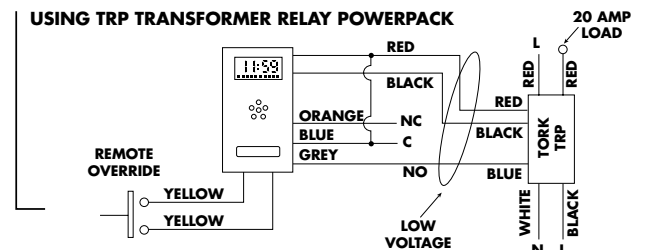
	TYPE	VOLTAGE	RATING
SSA100/200	Tungsten	120VAC	800W
	Ballast	120VAC	800W
		277VAC	1200W
	Motor	120VAC	1/8HP
SSA100/200R-24	Pilot Duty	120VAC	240VA
	30V	30V	1A
	1V min.	1V min.	100µA

### WIRING DIAGRAMS

#### SSA100/200



#### SSA200R-24



# SSA SERIES

## DIGITAL AUTO OFF IN-WALL TIME SWITCH



### APPLICATIONS



- Offices, meeting rooms, library aisles
- Stock and equipment rooms
- Exhaust fans – work areas, utility rooms, bathrooms
- Hot tub heaters and circulating pumps
- Timed override lighting and HVAC for after hours and for loads controlled by electromechanical or digital time switches.

### FEATURES

**8-IN-1 TIMING:** Choose from 8 preset ON intervals.

**MANUAL SCROLL-UP:** Option allows adjustment in 10 minute intervals.

**FLASH WARNING:** Optional flicker feature turns load off for 1 second, 2 minutes before end of timed cycle and again 1 minute before end of timed cycle.

**AUDIBLE WARNING:** Optional beep will sound every 12 seconds during the last 2 minutes of timed cycle.

**TAMPER RESISTANT:** Time ON interval preset hidden behind wall plate.

**EASY SET:** Dip switches provide quick set-up of timing and options.

**EASY WIRING:** No neutral needed, great for retrofit.

**BACKLIT DISPLAY:** Numerical read-out of time remaining includes graphic bar showing time remaining in 10% increments. Stands out strongly in lighted and dark areas.

**WALL PLATE:** Supplied with white standard single gang decorator wall plate.

**SSA-R24:** Offers low voltage control with SPDT output and includes momentary input.

### SPECIFICATIONS

**TIMING ACCURACY:** .002%.

**INPUT VOLTAGE:**  
120/277 VAC, 50/60Hz.

**WIRE SIZE:** #18AWG.

**OPERATING TEMPERATURE:**  
0°F to +100°F (-17°C to +37°C).

### ORDERING INFO

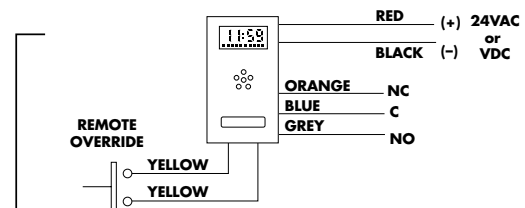
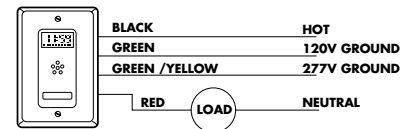
CATALOG NO.	UPC CODE	INPUT SUPPLY	TIME SETTINGS	OUTPUT CONTACTS
SSA100	14010	120/277 VAC	Minutes: 5, 15, 30 Hours: 1, 3, 6, 9, 12	SPST
SSA200	14011	120/277 VAC	Minutes: 10, 20, 40 Hours: 1, 1½, 2, 4, 8	SPST
SSA100R-24	14014	24VAC/24VDC	Minutes: 5, 15, 30 Hours: 1, 3, 6, 9, 12	SPDT
SSA200R-24	14015	24VAC/24VDC	Minutes: 10, 20, 40 Hours: 1, 1½, 2, 4, 8	SPDT
LCS115M	82082		Momentary Switch for Override (white)	SPST

### CONTACT RATINGS

	TYPE	VOLTAGE	RATING
SSA100/200	Tungsten	120VAC	800W
	Ballast	120VAC	800W
		277VAC	1200W
	Motor	120VAC	1/8HP
SSA100/200R-24	Pilot Duty	120VAC	240VA
	30V	30V	1A
	1V min.	1V min.	100µA

### WIRING DIAGRAMS

#### SSA100/200



#### SSA200R-24

