



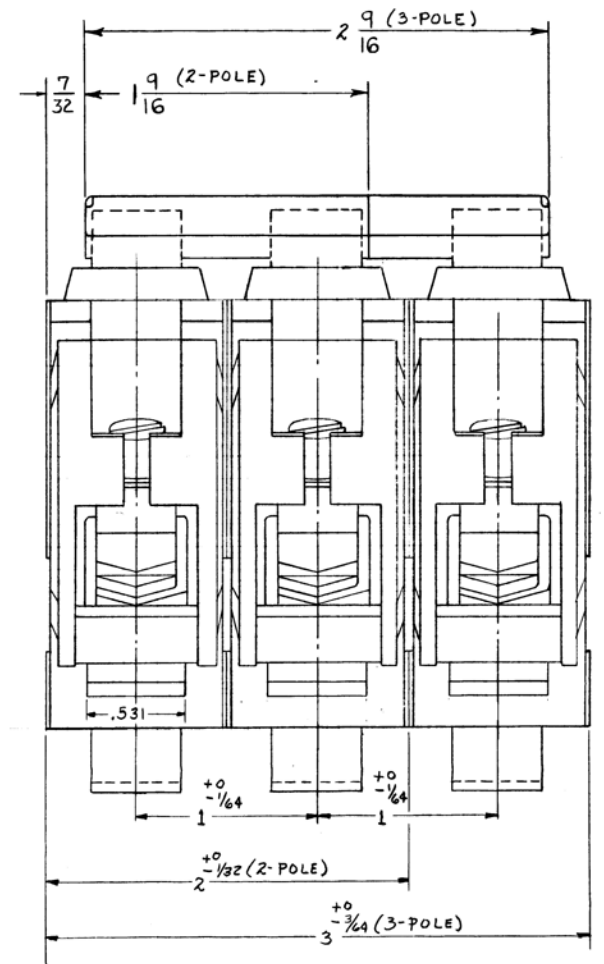
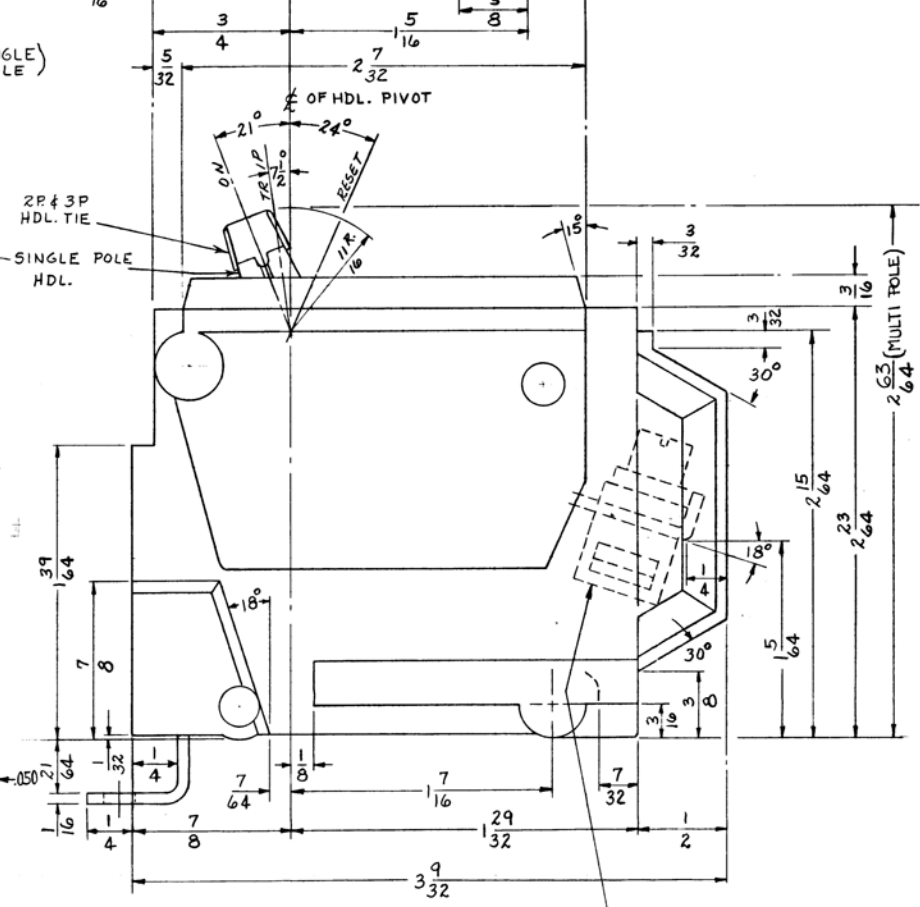
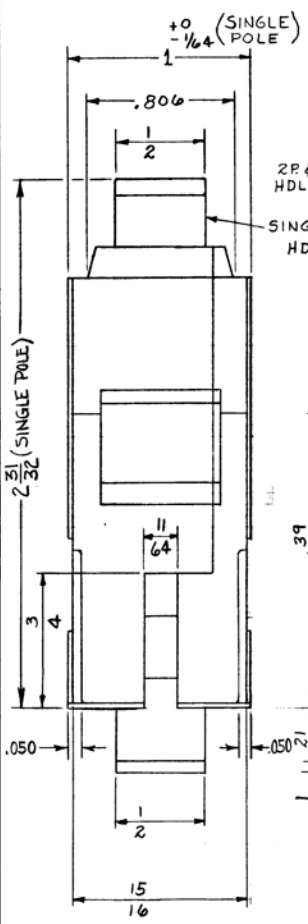
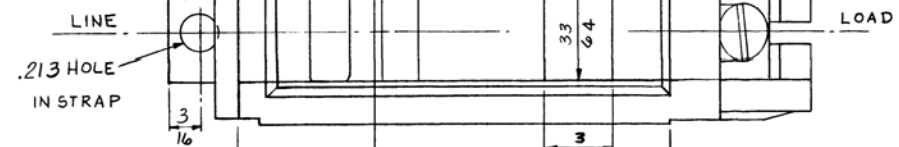
455C873  
ON NO. 133ND NO. 1ND1

UNLESS OTHERWISE SPECIFIED USE THE FOLLOWING—

| APPLIED PRACTICES | TOLERANCES ON MACHINED DIMENSIONS |                    |            |
|-------------------|-----------------------------------|--------------------|------------|
|                   | SURFACES                          | FRACTIONS          | DECIMALS   |
| ✓                 | ✓                                 | $\pm \frac{1}{64}$ | $\pm .005$ |

ANGLES:  $\pm$

A  
B  
C  
D  
E



LUG WIRE SIZE  
 70A. TO 100A. # 6 CU. # 4 AL. TO 1/2 CU-AL.  
 15A. TO 60A. # 14 CU. # 12 AL. TO # 3 CU. # 2 AL.

5

REV NO.  
 1