



TLS Twist-to-Lock Sensor



As Easy as Twist and Lock

The TLS Twist-to-Lock Sensor from SensorSwitch™ is available as field installable or embedded within industrial luminaires offering flexibility with installation. It simplifies installation in industrial applications with its tool-less design, eliminating the need for additional wiring. The TLS Sensor offers consistent occupancy detection in large areas, ideal for industrial settings.

The TLS Sensor arrives pre-configured out-of-the-box. To customize daylighting, brightness settings, and more, use the Infrared Wireless Programmer (sold separately). Configuration with the Infrared Wireless Programmer can be made from the floor while the sensor is installed or directly in the box.

Features

- **Flexible installation options:** Available embedded within industrial luminaires including the REBL Round High Bay and Compact Pro™ High Bay by Lithonia Lighting® or field installable for easy addition of controls.
- **Tool-less installation:** Simply twist and lock sensor in place without the need for tools or screws.
- **Configure from the floor with Programmer:** The Infrared Wireless Programmer allows for programming sensors while installed or in the box, enabling changes from floor level – ideal for large spaces like warehouses.
- **No wiring required:** Comes pre-wired with no need for additional wiring or wire nuts, reducing complexity of installation.
- **Built for tough environments:** IP66-rated, offering protection against dust and water, ensuring reliable performance in challenging environments.



TLS Twist-to-Lock Sensor



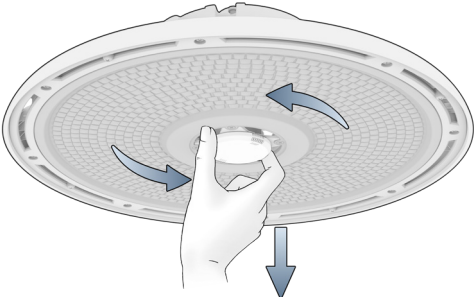
Infrared Wireless Programmer
(sold separately)



Effortless Field Installation — No Tools Required

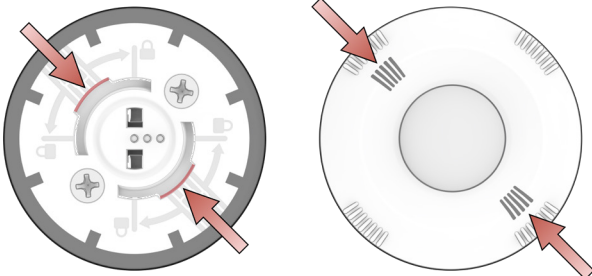
Remove Cap

Remove the protective cap* from the sensor by simply twisting it off—no tools needed, just a quick, easy turn.



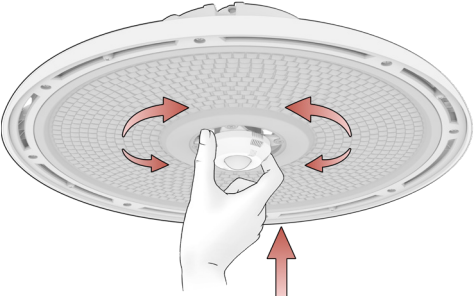
Align Sensor

Align the sensor to the center of the fixture and insert into the fixture.



Twist & Lock

Turn the sensor to secure into place, completing the tool-less installation. The sensor is configured out-of-the-box.



*TLS Sensor cap isn't needed after sensor installation

Easy Sensor Setting Changes with the Infrared Wireless Programmer

