



TELESCOPING STRUT REPLACEMENT, NO NUT

CATALOG NUMBER

TSR1220N



FEATURES

Can be attached directly to a wall for wall-mounted applications

Telescopes to the desired length and is locked in place by snapping closed a spring retainer clip

Standard strut profile runs the entire length of the part, allowing most standard fittings to be placed anywhere between the rods

Integrated ruler displays space between hanger rods in inches and centimeters

Supports up to seven 2" (50 DN) conduits, six 2" (50 DN) water filled pipes at 10' (3 m) spacing, or up to 18" (450 mm) cable tray

Conduit can be supported on the top and bottom, eliminating the need for double sided strut

Conduit and pipe can be placed directly on the strut profile, saving vertical space in buildings with limited room for installation

PRODUCT ATTRIBUTES

Material: Steel

Finish: Pregalvanized

Hole Size 1 (HS1): 0.54"

Hole Size 2 (HS2): 0.19"

Thickness (T): 0.04"

A: 12 1/2" - 20"

B: 14.000" - 21 1/2"

C: 1 5/8"

D: 7/8"

E: 1 3/8"

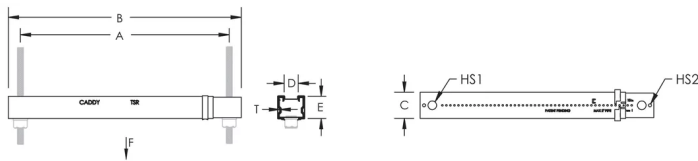
Static Load 1 (F1): 300lb

Static Load 2 (F2): 200lb

ADDITIONAL PRODUCT DETAILS

Static Load 1 represents a distributed load for 12" - 20" (300 - 500 mm) installations and a point load for 12" - 16" (300 - 400 mm) installations. Static Load 2 represents a point load for 16" - 20" (400 - 500 mm) installations.

DIAGRAMS



WARNING

nVent products shall be installed and used only as indicated in nVent's product instruction sheets and training materials. Instruction sheets are available at www.nvent.com and from your nVent customer service representative. Improper installation, misuse, misapplication or other failure to completely follow nVent's instructions and warnings may cause product malfunction, property damage, serious bodily injury and death and/or void your warranty.

North America

+1.800.753.9221

Option 1 – Customer Care

Option 2 – Technical Support

Europe

Netherlands:

+31 800-0200135

France:

+33 800 901 793

Europe

Germany:

800 1890272

Other Countries:

+31 13 5835404

APAC

Shanghai:

+ 86 21 2412 1618/19

Sydney:

+61 2 9751 8500



Our powerful portfolio of brands:
nVent.com **CADDY ERICO HOFFMAN RAYCHEM SCHROFF**
TRACER

© 2025 nVent. All nVent marks and logos are owned or licensed by nVent Services GmbH or its affiliates. All other trademarks are the property of their respective owners.

nVent reserves the right to change specifications without notice.



TELESCOPING STRUT REPLACEMENT, NO NUT

CATALOG NUMBER

TSR1220N



FEATURES

Can be attached directly to a wall for wall-mounted applications

Telescopes to the desired length and is locked in place by snapping closed a spring retainer clip

Standard strut profile runs the entire length of the part, allowing most standard fittings to be placed anywhere between the rods

Integrated ruler displays space between hanger rods in inches and centimeters

Supports up to seven 2" (50 DN) conduits, six 2" (50 DN) water filled pipes at 10' (3 m) spacing, or up to 18" (450 mm) cable tray

Conduit can be supported on the top and bottom, eliminating the need for double sided strut

Conduit and pipe can be placed directly on the strut profile, saving vertical space in buildings with limited room for installation

PRODUCT ATTRIBUTES

Material: Steel

Finish: Pregalvanized

Hole Size 1 (HS1): 0.54"

Hole Size 2 (HS2): 0.19"

Thickness (T): 0.04"

A: 12 1/2" - 20"

B: 14.000" - 21 1/2"

C: 1 5/8"

D: 7/8"

E: 1 3/8"

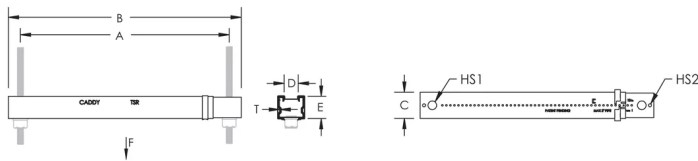
Static Load 1 (F1): 300lb

Static Load 2 (F2): 200lb

ADDITIONAL PRODUCT DETAILS

Static Load 1 represents a distributed load for 12" - 20" (300 - 500 mm) installations and a point load for 12" - 16" (300 - 400 mm) installations. Static Load 2 represents a point load for 16" - 20" (400 - 500 mm) installations.

DIAGRAMS



WARNING

nVent products shall be installed and used only as indicated in nVent's product instruction sheets and training materials. Instruction sheets are available at www.nvent.com and from your nVent customer service representative. Improper installation, misuse, misapplication or other failure to completely follow nVent's instructions and warnings may cause product malfunction, property damage, serious bodily injury and death and/or void your warranty.

North America

+1.800.753.9221

Option 1 – Customer Care

Option 2 – Technical Support

Europe

Netherlands:

+31 800-0200135

France:

+33 800 901 793

Europe

Germany:

800 1890272

Other Countries:

+31 13 5835404

APAC

Shanghai:

+ 86 21 2412 1618/19

Sydney:

+61 2 9751 8500



Our powerful portfolio of brands:
nVent.com **CADDY ERICO HOFFMAN RAYCHEM SCHROFF**
TRACER

© 2025 nVent. All nVent marks and logos are owned or licensed by nVent Services GmbH or its affiliates. All other trademarks are the property of their respective owners.

nVent reserves the right to change specifications without notice.