

Specification Sheet

Part Number: TSR3I-36

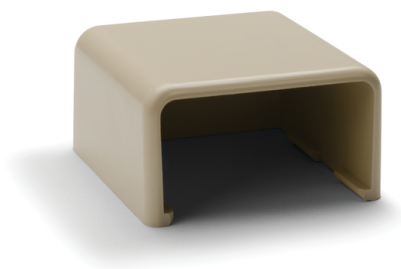
Tamper resistant covers with hidden latch provide security while allowing quick entry for cable maintenance.

PVC construction is lightweight, durable and more affordable than metallic raceway systems.

Flexible hinge is designed to reduce stress cracking and discoloration from repeated opening and closing.

Systems and fittings are available in white, office white and ivory to coordinate with a variety of décor.

Fittings incorporate a minimum 1" bend radius to meet TIA/EIA 568-B and 569-A standards.



End Cap, 1-3/4", 2-Piece, PVC, Ivory, 10 Individual/bag

Article Number	250-03361
Type	TSR3-36
Color	Ivory (IV)
Quantity Per	bag

Product Description	HellermannTyton surface raceway systems are the ideal solution for routing communication and power cables. No need to break into existing walls - raceway systems are designed to route cable along wall surfaces. Made of a PVC material, components are durable and affordable; and the one-piece construction and adhesive tape backing make positioning and mounting easy. HellermannTyton offers a low voltage TSR system and a power rated TSRP system that are available in three different diameters to accommodate different cable and wire bundle and conduit sizes. Both systems include a complete line of fittings and junction boxes that allow for clean and professional installations. TSR surface raceway systems can be used to route a variety of communication cable, including high speed UTP and fiber optic cable.
Short Description	End Cap, 1-3/4", 2-Piece, PVC, Ivory, 10 Individual/bag
Global Part Name	TSR3-36-PVC-BGE
Material	Polyvinylchloride (PVC)
Material Shortcut	PVC
Flammability	UL 94 V-0
Halogen Free	No
Operating Temperature	+122°F (+50°C)
Reach Compliant (Article 33)	No
ROHS Compliant	Yes
Package Quantity (Imperial)	10

Package Quantity (Metric) 10

Customs Number 3925900000

© 2023 HellermannTyton. All Rights Reserved.

[Contact Us](#) [RoHS/WEEE Compliance](#) [Disclaimer](#) [Terms and Conditions](#)