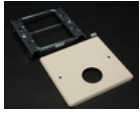




# ELLIOTT ELECTRIC SUPPLY

We Deliver...Lower Cost, Quality Products, & Personal Service

2310 N. Stallings Dr.  
75964-0000, TX Nacogdoches  
Phone: 936-569-7941  
Fax: 936-560-4685



## V4047AX 2G Dev Plate 1 Round Opening V

Wiremold/Legrand

Catalog Number	V4047AX
Manufacturer	Wiremold/Legrand
Description	<P>Accepts Straight Blade and Locking Single Receptacles With Face Diameters Of 1.38" to 1.39" (35MM to 36MM). Note: Certified to Canadian Safety Standards For Sale In Canada. When Ordering These Products, Change The "V" Color Prefix to "CV" or The "G" Color Prefix to "CG" to Denote The Canadian Versions.</P>
Weight per unit	0.3800 (lbs/each)
Product Category	Metallic Raceway & Accessories

### Features

Voltage	600.0 V
---------	---------

### Material, Color, and Finish

Color	Ivory
-------	-------

### Descriptions

Description	2G DEV PLATE 1 ROUND OPENING V
extra long description	WM V4047AX 2G DEV PLT 1 ROUND OPENI
Long Description	<p>Accepts straight blade and locking single receptacles with face diameters of 1.38" to 1.39" (35mm to 36mm). NOTE: Certified to Canadian Safety Standards for sale in Canada. When ordering these products, change the "V" color prefix to "CV" or the "G" color prefix to "CG" to denote the Canadian versions.</p>
Product Type	2G Dev PLT 1 Round Opening V
Special Features	Large cross section area, provides ample space for largewiring requirements.Complete line of fittings, provides complete wiring solutionand allows for interconnection between raceway systems. Gray baked enamel and Ivory ScuffCoat finish makes a scratch resistant surface.

### Manufacturer Information

Brand	WIREMOLD
GTIN	00786776050844
Manufacturers Part Number	V4047AX
UPC	786776050844

### Taxonomies, Classifications, and Categories

Category Description	Panduit & Wiremold Metallic & Non-Metallic Raceways
Type	Raceway



# ELLIOTT ELECTRIC SUPPLY

We Deliver...Lower Cost, Quality Products, & Personal Service

2310 N. Stallings Dr.  
75964-0000, TX Nacogdoches  
Phone: 936-569-7941  
Fax: 936-560-4685

## Packaging

Carton	1
Weight Per each	0.38

## Uses, Certifications, and Standards

standard	NAFTA, ROHS, UL, cULus Listed Raceway: File E4376 Guide RJBT. Fittings: File E41751 Guide RJPR. Base & Blank Cover: Meets Article 386 of NEC. Meets Section 12-600 of CEC.
----------	--