

# WGH LED SERIES

GLASS WALLPACK

tradeSELECT®

## FEATURES

- Perimeter lighting for safety and security. Use on factories, warehouses, self-storage, commercial buildings, etc
- LED units replace up to 400W HID
- Borosilicate glass refractor softens lamp image and provides uniform distribution - four times spacing to mount height
- Cast aluminum frame holds lens, hinges to side on housing and seals with two stainless steel screws
- Cast aluminum housing with 1/2" conduit entries, button photocontrol can be field installed
- DLC (DesignLights Consortium Qualified) - see [www.designlights.org](http://www.designlights.org)



## RELATED PRODUCTS

- ∅ [Perimaliter® PGM3/PGL](#)
- ∅ [NRG® 300L Series](#)
- ∅ [LNC2 Litepak](#)

## SPECIFICATIONS

### HOUSING

- Borosilicate glass refractor softens lamp image and provides uniform distribution
- Cast aluminum frame holds lens and seals to housing gasket with two stainless steel screws.
- Door assembly hinges to side on mid-size units; hinges down on small and large units
- Cast aluminum housing with three 1/2" conduit entries (on top and sides), for button photocontrol or surface conduit
- All units have dark bronze matte textured powder paint finish
- Operating temperature: -30°C to +40°C

### OPTICS

- Mid power LEDs offer lower glare, better uniformity, higher efficacies (up to 120 lumens per watt (LPW)) and lower thermals for longer lasting electronic components

### LED DRIVER

- Driver RoHS and IP66
- Single, 120V–277V or 347V/480V (225L only), 50/60Hz driver
- 10kA surge protection (parallel); Automatically takes fixture off-line when device is consumed

### CERTIFICATIONS

- Some models meet DesignLights
- Consortium (DLC) standard & premium qualifications, consult DLC website for more details: <http://www.designlights.org/QPL>
- Listed to UL1598 for use in wet locations

### WARRANTY

- See [HLI Standard Warranty](#) for additional information

## ORDERING GUIDE

Housing Size	Catalog Number	Wattage	Number of LEDs	Voltage	Dist. Type	Delivered Lumens	LPW	CCT	Weight lbs. (kg)
Small	WGH-30-4K-U-S	28W	108	120-277V	4	3259	119	4000K	6.75 (3)
Small	WGH-30-5K-U-S	28W	108	120-277V	4	3326	121	5000K	6.75 (3)
Small	WGH-40-4K-U-S	40W	108	120-277V	4	4394	110	4000K	6.75 (3)
Small	WGH-40-5K-U-S	40W	108	120-277V	4	4484	113	5000K	6.75 (3)
Medium	WGH-110L-4K-U-M	54W	110	120-277V	4	6170	113	4000K	11 (5.0)
Medium	WGH-110L-5K-U-M	54W	110	120-277V	4	6372	118	5000K	11 (5.0)
Medium	WGH-133L-4K-U-M	76W	133	120-277V	4	8989	118	4000K	11 (5.0)
Medium	WGH-133L-5K-U-M	76W	133	120-277V	4	9173	120	5000K	11 (5.0)
Large	WGH-225L-4K-U-L	102W	225	120-277V	4	11,838	116	4000K	19 (8.6)
Large	WGH-225L-5K-U-L	102W	225	120-277V	4	12,134	119	5000K	19 (8.6)
Large	WGH-225L-4K-C-L	110W	225	347/480V	4	12,818	117	4000K	19 (8.6)

KEY DATA	
Lumen Range	3,259–12,818
Wattage Range	28–110
Efficacy Range (LPW)	110–121
Fixture Projected Life (Hours)	L70>50K
Weight lbs. (kg)	6.75–19 (3–8.5)

# WGH LED

GLASS WALLPACK

## ORDERING GUIDE

### Accessories

<b>PBT-1</b>	Photocontrol, 120V
<b>PBT-234</b>	Photocontrol, 208, 240, 277V
<b>SM708-GUARD</b>	Wire Guard for L size
<b>WGH-LED-RL-M</b>	LED replacement lens assembly for M size
<b>WGH-LED-RL-L</b>	LED replacement lens assembly for L size

## PERFORMANCE DATA

Description	SYSTEM WATTS	Distribution Type	5K (5000K NOMINAL 80 CRI)					4K (4000K NOMINAL 80 CRI)				
			Lumens	LPW	B	U	G	Lumens	LPW	B	U	G
WGH-30	28W	4	3326	121	1	3	3	3339	116	1	3	3
WGH-40	40W	4	4484	113	1	3	3	3339	116	1	3	3
WGH-110L	54W	4	6372	118	1	4	4	6170	113	1	4	4
WGH-133L	76W	4	8989	118	1	5	5	9173	120	1	5	5
WGH-225L	102W	4	12,123	119	2	5	5	11,838	116	2	5	5
WGH-225L*	110W	4						12,818	117	2	5	5

\*347 and 480 VAC input Lumen values are from photometric test performed in accordance with IESNA LM-79-08. Data is considered to be representative of the configurations shown. Actual performance may differ as a result of end-user environment application and inherent performance balances of the electrical components.

## PROJECTED LUMEN MAINTENANCE

Ambient Temperature	OPERATING HOURS					
	0	25,000	50,000	TM-21-11' L96 60,000	100,000	L70 (Hours)
25°C / 77°F	1.00	0.96	0.93	0.92	0.88	>280,000
40°C / 104°F	0.99	0.95	0.91	0.90	0.84	>206,000

1. Projected per IESNA TM-21-11 \* (Niche NFSL757DT-VT, 150mA, 85°C Ts, 10,000hrs) Data references the extrapolated performance projections for the base model in a 40°C ambient, based on 10,000 hours of LED testing per IESNA LM-80-08

# WGH LED

GLASS WALLPACK

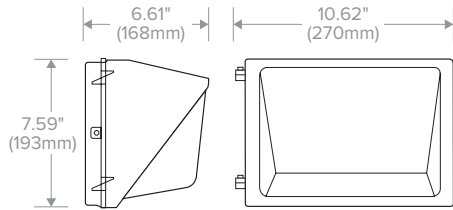
## LUMINAIRE AMBIENT TEMPERATURE FACTOR (LATF)

Ambient Temperature		Lumen Multiplier
0°C	32°F	1.02
10°C	50°F	1.02
20°C	68°F	1.01
25°C	77°F	1.00
30°C	86°F	0.99
40°C	104°F	0.98
50°C	122°F	0.97

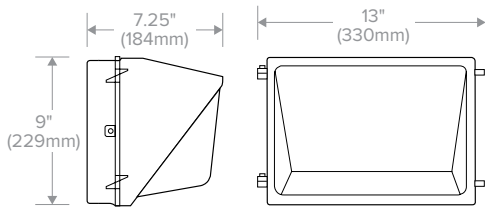
Use these factors to determine relative lumen output for average ambient temperatures from 0-40°C (32-104°F).

## DIMENSIONS

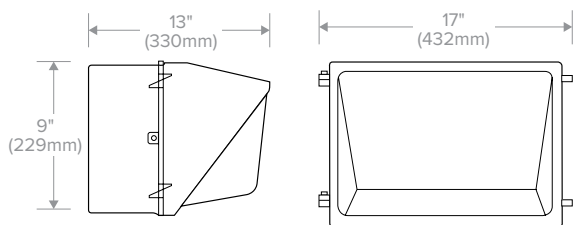
### SMALL



### MEDIUM



### LARGE



# WGH LED

GLASS WALLPACK

## PHOTOMETRY

### WGH-30-4K-U-S

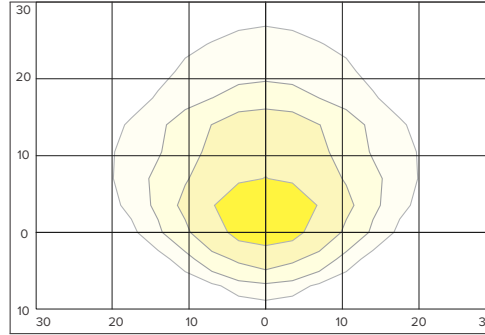
#### LUMINAIRE DATA

Description	4000 Kelvin, 70 CRI
Distribution Type	IV
Delivered Lumens	3326
Watts	27.4
Efficacy	121.4
Mounting	Wall

#### ZONAL LUMEN SUMMARY

Zone	Lumens	% Luminaire
Downward Street Side	2559	76.9%
Downward House Side	448	13.5%
Downward Total	3007	90.4%
Upward Street Side	313	9.4%
Upward House Side	6	0.2%
Upward Total	319	9.6%
Total Flux	3326	100.0%

#### ISOMETRIC FOOTCANDLE



10' Mounting Height

- 5.0 FC
- 2.0 FC
- 1.0 FC
- 0.5 FC

### WGH-40-4K-U-S

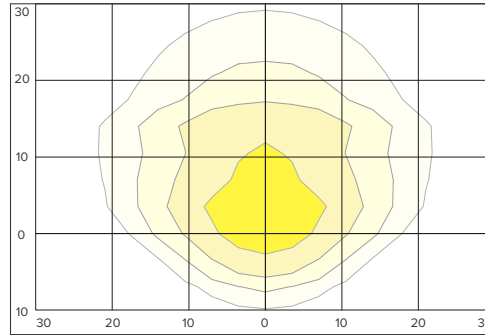
#### LUMINAIRE DATA

Description	4000 Kelvin 70 CRI
Distribution Type	IV
Delivered Lumens	4484
Watts	39
Efficacy	112.9
Mounting	Wall

#### ZONAL LUMEN SUMMARY

Zone	Lumens	% Luminaire
Downward Street Side	3425	76.4%
Downward House Side	604	13.5%
Downward Total	4029	90.0%
Upward Street Side	444	9.9%
Upward House Side	11	2.0%
Upward Total	455	10.1%
Upward House Side	4484	100.0%

#### ISOMETRIC FOOTCANDLE



10' Mounting Height

- 5.0 FC
- 2.0 FC
- 1.0 FC
- 0.5 FC

### WGH-110-4K-U-M

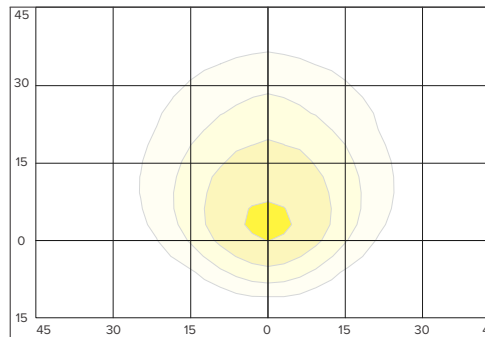
#### LUMINAIRE DATA

Description	4000 Kelvin 70 CRI
Distribution Type	IV
Delivered Lumens	6271
Watts	52.7
Efficacy	119
Mounting	Wall

#### ZONAL LUMEN SUMMARY

Zone	Lumens	% Luminaire
Downward Street Side	4140.8	66.0%
Downward House Side	728.4	11.6%
Downward Total	4869.2	77.6%
Upward Street Side	1349	21.5%
Upward House Side	53.1	0.8%
Upward Total	1402	22.4%
Total Flux	6271	100.0%

#### ISOMETRIC FOOTCANDLE



15' Mounting Height

- 5.0 FC
- 2.0 FC
- 1.0 FC
- 0.5 FC

# WGH LED

GLASS WALLPACK

## PHOTOMETRY

### WGH-133-4K-U-M

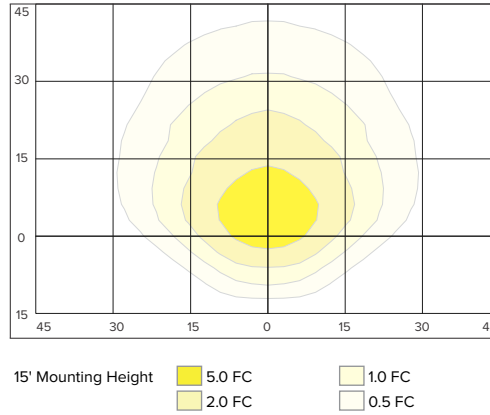
#### LUMINAIRE DATA

Description	4000 Kelvin 70 CRI
Distribution Type	IV
Delivered Lumens	8795
Watts	74.3
Efficacy	117.7
Mounting	Wall

#### ZONAL LUMEN SUMMARY

Zone	Lumens	% Luminaire
Downward Street Side	6161	70.0%
Downward House Side	971	11.0%
Downward Total	7131	81.1%
Upward Street Side	1616	18.4%
Upward House Side	48	0.5%
Upward Total	1663	18.9%
Total Flux	8795	100.0%

#### ISOMETRIC FOOTCANDLE



### WGH-225L-4K-U-L

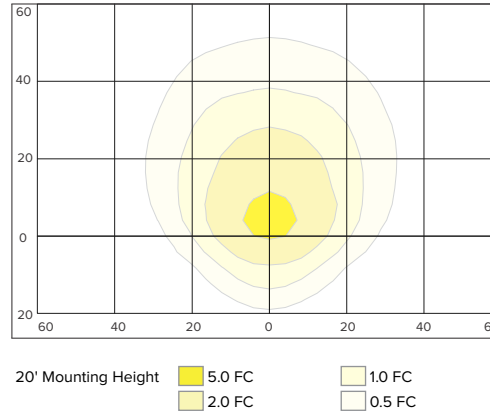
#### LUMINAIRE DATA

Description	4000 Kelvin 70 CRI
Distribution Type	IV
Delivered Lumens	11507
Watts	92
Efficacy	125
Mounting	Wall

#### ZONAL LUMEN SUMMARY

Zone	Lumens	% Luminaire
Downward Street Side	7519.1	65.3%
Downward House Side	1444.5	12.6%
Downward Total	8963.6	77.9%
Upward Street Side	2457.7	21.4%
Upward House Side	85.6	0.7%
Upward Total	2543	22.1%
Total Flux	11506.9	100%

#### ISOMETRIC FOOTCANDLE



## SHIPPING INFORMATION

Catalog Number	G.W.(kg)/CTN	CARTON DIMENSIONS		
		Length Inch (cm)	Width Inch (cm)	Height Inch (cm)
WGH-30/40	6.75 (3.0)	11.6 (29.5)	9.6 (24.5)	8.8 (22.5)
WGH-110L/133L	11.0 (4.8)	15.0 (38)	9.1 (19)	11.8 (24)
WGH-225L	19.0 (8.6)	21.2 (54)	12.0 (28)	14.7 (24)

DATE: \_\_\_\_\_ LOCATION: \_\_\_\_\_  
 TYPE: \_\_\_\_\_ PROJECT: \_\_\_\_\_  
 CATALOG #: \_\_\_\_\_

# WGH LED SERIES

GLASS WALLPACK

tradeSELECT®

## FEATURES

- Perimeter lighting for safety and security. Use on factories, warehouses, self-storage, commercial buildings, etc
- LED units replace up to 400W HID
- Borosilicate glass refractor softens lamp image and provides uniform distribution - four times spacing to mount height
- Cast aluminum frame holds lens, hinges to side on housing and seals with two stainless steel screws
- Cast aluminum housing with 1/2" conduit entries, button photocontrol can be field installed
- DLC (DesignLights Consortium Qualified) - see [www.designlights.org](http://www.designlights.org)



## RELATED PRODUCTS

- ∅ [Perimaliter® PGM3/PGL](#)
- ∅ [NRG® 300L Series](#)
- ∅ [LNC2 Litepak](#)

## SPECIFICATIONS

### HOUSING

- Borosilicate glass refractor softens lamp image and provides uniform distribution
- Cast aluminum frame holds lens and seals to housing gasket with two stainless steel screws.
- Door assembly hinges to side on mid-size units; hinges down on small and large units
- Cast aluminum housing with three 1/2" conduit entries (on top and sides), for button photocontrol or surface conduit
- All units have dark bronze matte textured powder paint finish
- Operating temperature: -30°C to +40°C

### OPTICS

- Mid power LEDs offer lower glare, better uniformity, higher efficacies (up to 120 lumens per watt (LPW)) and lower thermals for longer lasting electronic components

### LED DRIVER

- Driver RoHS and IP66
- Single, 120V–277V or 347V/480V (225L only), 50/60Hz driver
- 10kA surge protection (parallel); Automatically takes fixture off-line when device is consumed

### CERTIFICATIONS

- Some models meet DesignLights
- Consortium (DLC) standard & premium qualifications, consult DLC website for more details: <http://www.designlights.org/QPL>
- Listed to UL1598 for use in wet locations

### WARRANTY

- See [HLI Standard Warranty](#) for additional information

## ORDERING GUIDE

Housing Size	Catalog Number	Wattage	Number of LEDs	Voltage	Dist. Type	Delivered Lumens	LPW	CCT	Weight lbs. (kg)
Small	WGH-30-4K-U-S	28W	108	120-277V	4	3259	119	4000K	6.75 (3)
Small	WGH-30-5K-U-S	28W	108	120-277V	4	3326	121	5000K	6.75 (3)
Small	WGH-40-4K-U-S	40W	108	120-277V	4	4394	110	4000K	6.75 (3)
Small	WGH-40-5K-U-S	40W	108	120-277V	4	4484	113	5000K	6.75 (3)
Medium	WGH-110L-4K-U-M	54W	110	120-277V	4	6170	113	4000K	11 (5.0)
Medium	WGH-110L-5K-U-M	54W	110	120-277V	4	6372	118	5000K	11 (5.0)
Medium	WGH-133L-4K-U-M	76W	133	120-277V	4	8989	118	4000K	11 (5.0)
Medium	WGH-133L-5K-U-M	76W	133	120-277V	4	9173	120	5000K	11 (5.0)
Large	WGH-225L-4K-U-L	102W	225	120-277V	4	11,838	116	4000K	19 (8.6)
Large	WGH-225L-5K-U-L	102W	225	120-277V	4	12,134	119	5000K	19 (8.6)
Large	WGH-225L-4K-C-L	110W	225	347/480V	4	12,818	117	4000K	19 (8.6)

KEY DATA	
Lumen Range	3,259–12,818
Wattage Range	28–110
Efficacy Range (LPW)	110–121
Fixture Projected Life (Hours)	L70>50K
Weight lbs. (kg)	6.75–19 (3–8.5)

# WGH LED

GLASS WALLPACK

## ORDERING GUIDE

### Accessories

<b>PBT-1</b>	Photocontrol, 120V
<b>PBT-234</b>	Photocontrol, 208, 240, 277V
<b>SM708-GUARD</b>	Wire Guard for L size
<b>WGH-LED-RL-M</b>	LED replacement lens assembly for M size
<b>WGH-LED-RL-L</b>	LED replacement lens assembly for L size

## PERFORMANCE DATA

Description	SYSTEM WATTS	Distribution Type	5K (5000K NOMINAL 80 CRI)					4K (4000K NOMINAL 80 CRI)				
			Lumens	LPW	B	U	G	Lumens	LPW	B	U	G
WGH-30	28W	4	3326	121	1	3	3	3339	116	1	3	3
WGH-40	40W	4	4484	113	1	3	3	3339	116	1	3	3
WGH-110L	54W	4	6372	118	1	4	4	6170	113	1	4	4
WGH-133L	76W	4	8989	118	1	5	5	9173	120	1	5	5
WGH-225L	102W	4	12,123	119	2	5	5	11,838	116	2	5	5
WGH-225L*	110W	4						12,818	117	2	5	5

\*347 and 480 VAC input Lumen values are from photometric test performed in accordance with IESNA LM-79-08. Data is considered to be representative of the configurations shown. Actual performance may differ as a result of end-user environment application and inherent performance balances of the electrical components.

## PROJECTED LUMEN MAINTENANCE

Ambient Temperature	OPERATING HOURS					
	0	25,000	50,000	TM-21-11' L96 60,000	100,000	L70 (Hours)
25°C / 77°F	1.00	0.96	0.93	0.92	0.88	>280,000
40°C / 104°F	0.99	0.95	0.91	0.90	0.84	>206,000

1. Projected per IESNA TM-21-11 \* (Niche NFSL757DT-VT, 150mA, 85°C Ts, 10,000hrs) Data references the extrapolated performance projections for the base model in a 40°C ambient, based on 10,000 hours of LED testing per IESNA LM-80-08

# WGH LED

GLASS WALLPACK

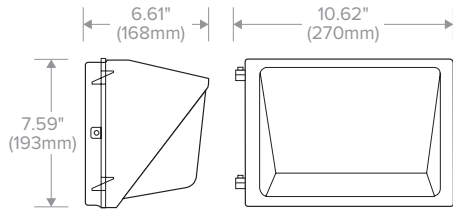
## LUMINAIRE AMBIENT TEMPERATURE FACTOR (LATF)

Ambient Temperature		Lumen Multiplier
0°C	32°F	1.02
10°C	50°F	1.02
20°C	68°F	1.01
25°C	77°F	1.00
30°C	86°F	0.99
40°C	104°F	0.98
50°C	122°F	0.97

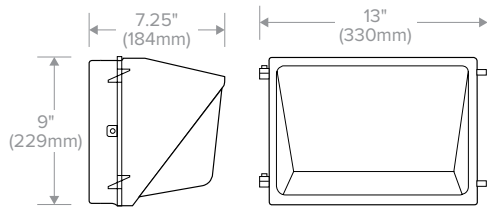
Use these factors to determine relative lumen output for average ambient temperatures from 0-40°C (32-104°F).

## DIMENSIONS

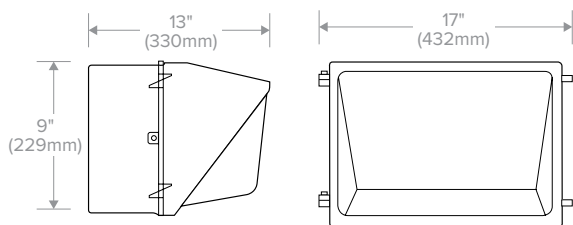
### SMALL



### MEDIUM



### LARGE





# WGH LED

GLASS WALLPACK

## PHOTOMETRY

### WGH-30-4K-U-S

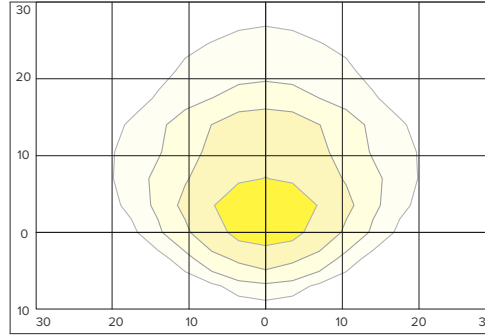
#### LUMINAIRE DATA

Description	4000 Kelvin, 70 CRI
Distribution Type	IV
Delivered Lumens	3326
Watts	27.4
Efficacy	121.4
Mounting	Wall

#### ZONAL LUMEN SUMMARY

Zone	Lumens	% Luminaire
Downward Street Side	2559	76.9%
Downward House Side	448	13.5%
Downward Total	3007	90.4%
Upward Street Side	313	9.4%
Upward House Side	6	0.2%
Upward Total	319	9.6%
Total Flux	3326	100.0%

#### ISOMETRIC FOOTCANDLE



10' Mounting Height

- 5.0 FC
- 2.0 FC
- 1.0 FC
- 0.5 FC

### WGH-40-4K-U-S

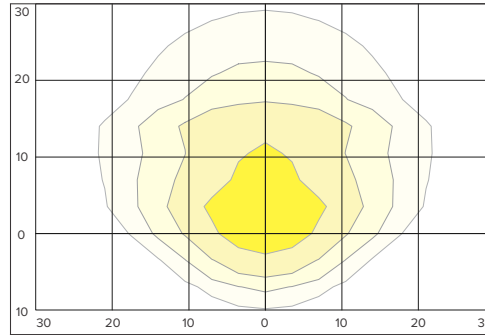
#### LUMINAIRE DATA

Description	4000 Kelvin 70 CRI
Distribution Type	IV
Delivered Lumens	4484
Watts	39
Efficacy	112.9
Mounting	Wall

#### ZONAL LUMEN SUMMARY

Zone	Lumens	% Luminaire
Downward Street Side	3425	76.4%
Downward House Side	604	13.5%
Downward Total	4029	90.0%
Upward Street Side	444	9.9%
Upward House Side	11	2.0%
Upward Total	455	10.1%
Upward House Side	4484	100.0%

#### ISOMETRIC FOOTCANDLE



10' Mounting Height

- 5.0 FC
- 2.0 FC
- 1.0 FC
- 0.5 FC

### WGH-110-4K-U-M

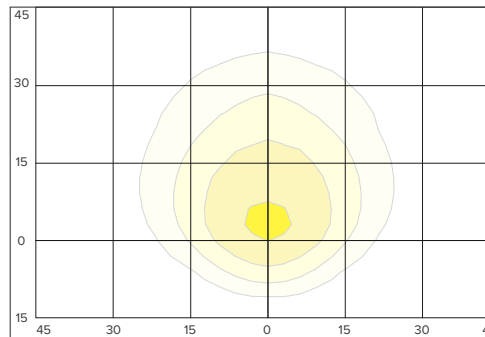
#### LUMINAIRE DATA

Description	4000 Kelvin 70 CRI
Distribution Type	IV
Delivered Lumens	6271
Watts	52.7
Efficacy	119
Mounting	Wall

#### ZONAL LUMEN SUMMARY

Zone	Lumens	% Luminaire
Downward Street Side	4140.8	66.0%
Downward House Side	728.4	11.6%
Downward Total	4869.2	77.6%
Upward Street Side	1349	21.5%
Upward House Side	53.1	0.8%
Upward Total	1402	22.4%
Total Flux	6271	100.0%

#### ISOMETRIC FOOTCANDLE



15' Mounting Height

- 5.0 FC
- 2.0 FC
- 1.0 FC
- 0.5 FC

# WGH LED

GLASS WALLPACK

## PHOTOMETRY

### WGH-133-4K-U-M

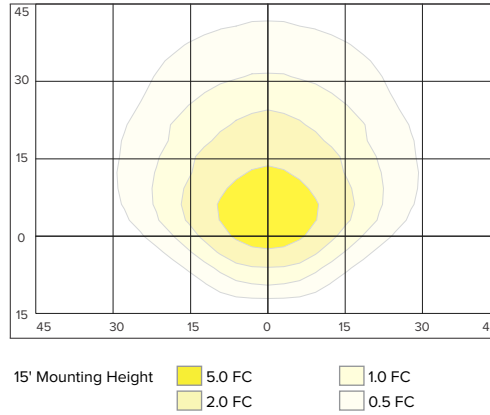
#### LUMINAIRE DATA

Description	4000 Kelvin 70 CRI
Distribution Type	IV
Delivered Lumens	8795
Watts	74.3
Efficacy	117.7
Mounting	Wall

#### ZONAL LUMEN SUMMARY

Zone	Lumens	% Luminaire
Downward Street Side	6161	70.0%
Downward House Side	971	11.0%
Downward Total	7131	81.1%
Upward Street Side	1616	18.4%
Upward House Side	48	0.5%
Upward Total	1663	18.9%
Total Flux	8795	100.0%

#### ISOMETRIC FOOTCANDLE



### WGH-225L-4K-U-L

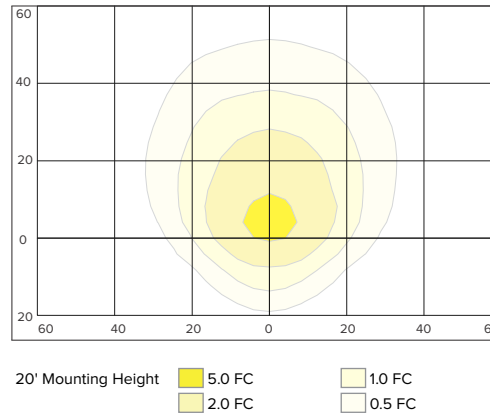
#### LUMINAIRE DATA

Description	4000 Kelvin 70 CRI
Distribution Type	IV
Delivered Lumens	11507
Watts	92
Efficacy	125
Mounting	Wall

#### ZONAL LUMEN SUMMARY

Zone	Lumens	% Luminaire
Downward Street Side	7519.1	65.3%
Downward House Side	1444.5	12.6%
Downward Total	8963.6	77.9%
Upward Street Side	2457.7	21.4%
Upward House Side	85.6	0.7%
Upward Total	2543	22.1%
Total Flux	11506.9	100%

#### ISOMETRIC FOOTCANDLE



## SHIPPING INFORMATION

Catalog Number	G.W(kg)/CTN	CARTON DIMENSIONS		
		Length Inch (cm)	Width Inch (cm)	Height Inch (cm)
WGH-30/40	6.75 (3.0)	11.6 (29.5)	9.6 (24.5)	8.8 (22.5)
WGH-110L/133L	11.0 (4.8)	15.0 (38)	9.1 (19)	11.8 (24)
WGH-225L	19.0 (8.6)	21.2 (54)	12.0 (28)	14.7 (24)