

# Wall Light

## 43 Watt LED

**Classic Series LED**  
TRADITIONAL HID REPLACEMENT

**Glare Free**



Design is Protected by U.S. Patent No. 9,482,395



### WLM43LED

**WATTS: 43**

**CCT: 4500K**  
**LUMENS: 4,350**  
**LPW: 107 CRI: 82**  
**DIMMING: 10-100%**

**CCT: 3000K**  
**LUMENS: 3,908**  
**LPW: 96 CRI: 81**  
**DIMMING: 10-100%**

### Ordering Information

CATALOG #	DESCRIPTION	VOLTS	COLOR TEMP
WLM43LED	43W LED Wall Light	120-277	4500K
WLM43LED3K	43W LED Wall Light	120-277	3000K

### Options

ADD SUFFIX #	DESCRIPTION
PC	120V Photocontrol
PM	208-277V Photocontrol
EB	Emergency Back-Up
4	480V Driver

Note: Atlas uses only premium LED compatible photocontrols

### Performance

- 95% Efficient Reflector Targets the Light
- Eliminates Glare & Offensive Light
- Less Wasted Light
- More Footcandles on the Ground
- Creates a Smooth & Uniform Light Pattern

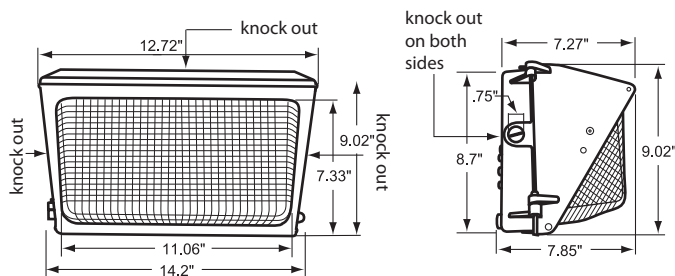
### Dimensions and Specifications

**Overall Height: 9.02"**

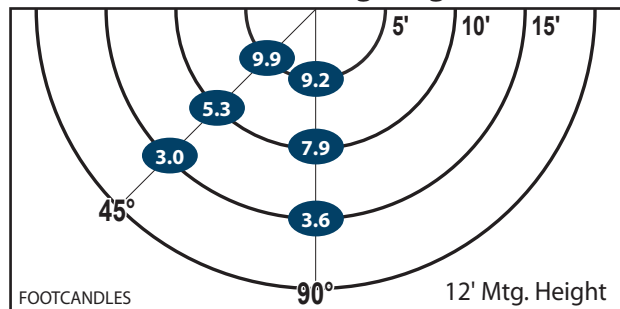
**Depth: 7.85"**

**Overall Width: 14.2"**

**Weight: 9.2 lbs.**

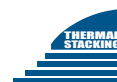


### Recommended Mounting Height - 12-14 ft.



Mtg. Hgt.	FOOTCANDLES ON THE GROUND						Avg. FCs 450 SQ. FT.
	90°			45°			
	5'	10'	15'	5'	10'	15'	
12'	9.2	7.9	3.6	9.9	5.3	3.0	<b>6.5</b>
14'	8.0	4.4	3.0	7.6	6.1	3.7	<b>5.5</b>

**200,000+ HOURS**



\*The majority of Atlas Lighting Products are assembled in USA facilities by an American Workforce utilizing both Domestic and Foreign components



# Wall Light

## 43 Watt LED

**Classic Series LED**  
TRADITIONAL HID REPLACEMENT

**Glare Free**



Design is Protected by U.S. Patent No. 9,482,395



### WLM43LED

**WATTS: 43**

**CCT: 4500K**

**CCT: 3000K**

**LUMENS: 4,350**

**LUMENS: 3,908**

**LPW: 107 CRI: 82**

**LPW: 96 CRI: 81**

**DIMMING: 10-100%**

**DIMMING: 10-100%**

### Ordering Information

CATALOG #	DESCRIPTION	VOLTS	COLOR TEMP
WLM43LED	43W LED Wall Light	120-277	4500K
WLM43LED3K	43W LED Wall Light	120-277	3000K

### Options

ADD SUFFIX #	DESCRIPTION
PC	120V Photocontrol
PM	208-277V Photocontrol
EB	Emergency Back-Up
4	480V Driver

Note: Atlas uses only premium LED compatible photocontrols

### Performance

- 95% Efficient Reflector Targets the Light
- Eliminates Glare & Offensive Light
- Less Wasted Light
- More Footcandles on the Ground
- Creates a Smooth & Uniform Light Pattern

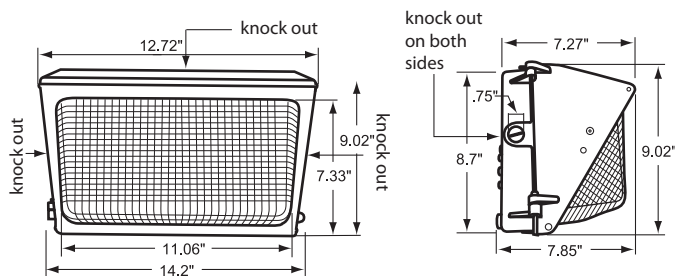
### Dimensions and Specifications

**Overall Height: 9.02"**

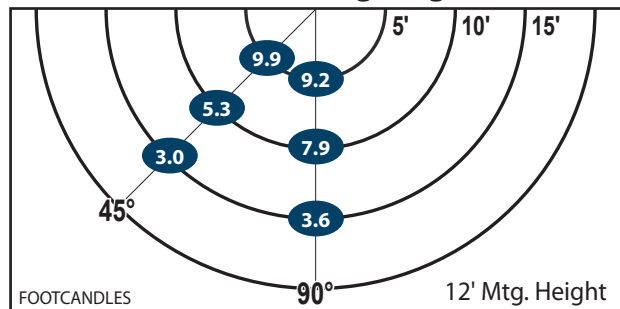
**Depth: 7.85"**

**Overall Width: 14.2"**

**Weight: 9.2 lbs.**



### Recommended Mounting Height - 12-14 ft.



Mtg. Hgt.	FOOTCANDLES ON THE GROUND						Avg. FCs 450 SQ. FT.
	90°			45°			
	5'	10'	15'	5'	10'	15'	
12'	9.2	7.9	3.6	9.9	5.3	3.0	<b>6.5</b>
14'	8.0	4.4	3.0	7.6	6.1	3.7	<b>5.5</b>

**200,000+ HOURS**



\*The majority of Atlas Lighting Products are assembled in USA facilities by an American Workforce utilizing both Domestic and Foreign components

