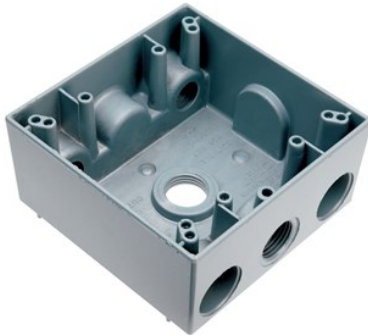


---

## WEATHERPROOF TWO GANG BOX, GRAY

WPB242 | [Pass & Seymour](#)



---

### FEATURES & BENEFITS

Weatherproof 2 Gang Box, 4 hole 1/2", 30.5 Cu.In., Gray (2 Holes One End, 1 Hole Other End, 1 Hole in Back)



- Wide range of sizes, depths, and gangs.
- Baked-on electrostatic, polyester, powder paint for superior scratch and corrosion resistance.
- 2 closure plugs and mounting lugs furnished with all boxes.
- UL Listed for wet and/or damp locations with appropriate cover.
- Designed for both interior and exterior applications.
- Will accept standard 4 screw mounting covers and single gang weatherproof covers.
- Simply strike desired knockout studs with a sharp hammer blow for clean mounting holes.
- Heavy die-cast aluminum.
- For covering patents, see [www.legrand.us/patents](http://www.legrand.us/patents).

---

### SPECIFICATIONS

#### GENERAL INFO

Color: Gray  
Size: 2-gang  
Type: Box  
Special Features: Weatherproof

#### LISTING AGENCIES/THIRD PARTY CERTIFICATIONS

CSA Listing Info: Yes  
CUL Listing No: No  
cULus: No  
cURus: No  
Federal Spec: No  
UL Listing No: Yes

UN SPSC: 39121305

UR: No

#### **DIMENSIONS**

Depth (US): 2.24"

Height (US): 4.50"

Width (US): 4.50"

#### **TECHNICAL INFORMATION**

Material: Aluminum

Capacity: 2-gang

Feeds: One half inch knockouts

#### **BUY AMERICAN ACT COMPLIANCE**

Country Of Origin: INDIA

Buy American Act Status: No

---

## WEATHERPROOF TWO GANG BOX, GRAY

WPB242 | [Pass & Seymour](#)



---

### FEATURES & BENEFITS

Weatherproof 2 Gang Box, 4 hole 1/2", 30.5 Cu.In., Gray (2 Holes One End, 1 Hole Other End, 1 Hole in Back)



- Wide range of sizes, depths, and gangs.
- Baked-on electrostatic, polyester, powder paint for superior scratch and corrosion resistance.
- 2 closure plugs and mounting lugs furnished with all boxes.
- UL Listed for wet and/or damp locations with appropriate cover.
- Designed for both interior and exterior applications.
- Will accept standard 4 screw mounting covers and single gang weatherproof covers.
- Simply strike desired knockout studs with a sharp hammer blow for clean mounting holes.
- Heavy die-cast aluminum.
- For covering patents, see [www.legrand.us/patents](http://www.legrand.us/patents).

---

### SPECIFICATIONS

#### GENERAL INFO

Color: Gray  
Size: 2-gang  
Type: Box  
Special Features: Weatherproof

#### LISTING AGENCIES/THIRD PARTY CERTIFICATIONS

CSA Listing Info: Yes  
CUL Listing No: No  
cULus: No  
cURus: No  
Federal Spec: No  
UL Listing No: Yes

UN SPSC: 39121305

UR: No

#### **DIMENSIONS**

Depth (US): 2.24"

Height (US): 4.50"

Width (US): 4.50"

#### **TECHNICAL INFORMATION**

Material: Aluminum

Capacity: 2-gang

Feeds: One half inch knockouts

#### **BUY AMERICAN ACT COMPLIANCE**

Country Of Origin: INDIA

Buy American Act Status: No