

BREATHER/DRAINS

Combination Breather/Drains

XDB Series

FEATURES

- Stainless steel combination breather drain. Install in top of enclosures as breather. Install in bottom of enclosure as drain.

NOMINAL DIMENSIONS [inches]

Catalog #	Thread	A	B
XDB2	½ NPT	1 ⅝	⅞

Certifications

Class I, Groups C & D
 Class II, Groups E, F & G

Class III
 UL Standard 886
 CSA Standard C22.2 No. 30



*ATEX APPLICATION NOTE: Maximum Enclosure Volume 41000 cm³ (2500 in³)

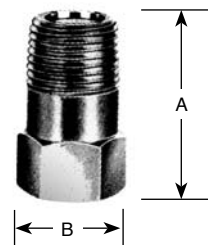
NOMINAL DIMENSIONS [inches]

Catalog #	Thread	A	B	C
XDBH2	½ NPT	½ NPT	⅞ HEX	1 ¼

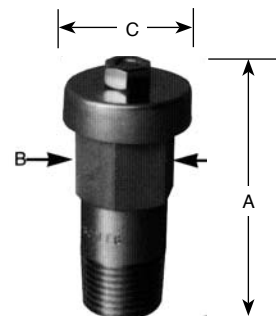
Certifications

Class I, Groups A, B, C & D
 Class II, Groups E, F & G
 Class III

UL Standard 886
 CSA Standard C22.2 No. 30
 ATEX EExd IIB DEMKO
 00E.004127U
 (when installed in XCEX & XJ_X enclosures)



XDB2



XDBH2

Type Bd Series

FEATURES

- Allows the air inside an 'Ex d' Flameproof or Class I, Div 1 enclosure to breathe with the surrounding atmosphere.
- Allows any moisture that enters the enclosure to drain while maintaining the overall integrity of the installation.

PART NUMBER BUILD **Bd 20 N NT**

BASE CATALOG NUMBER

THREAD DESIGNATION

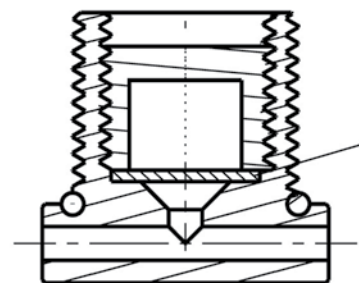
Metric	NPT	NPS	ISO	ISO	ET	PG
20	½	½S	½P	½T	¾E	13
25	¾	¾S	¾P	¾T	1E	16P

O-RING

Nitrile (std.) - NT
 Silicone - SC

MATERIAL

Nickel Plated Brass - N
 316 Stainless Steel - S



Bd Series

Certifications

Class I, Div 1 Groups A, B, C & D
 AExd IIC / AExe II Class I, Zone 1

II 2 GD Exd IIC/Exe II Category 2 & 3
 CSA Standard C22.2 No. 30



BREATHER/DRAINS

Combination Breather/Drains

XDB Series

FEATURES

- Stainless steel combination breather drain. Install in top of enclosures as breather. Install in bottom of enclosure as drain.

NOMINAL DIMENSIONS [inches]

Catalog #	Thread	A	B
XDB2	½ NPT	1 ⅝	⅞

Certifications

Class I, Groups C & D
Class II, Groups E, F & G

Class III
UL Standard 886
CSA Standard C22.2 No. 30



*ATEX APPLICATION NOTE: Maximum Enclosure Volume 41000 cm³ (2500 in³)

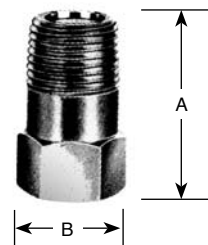
NOMINAL DIMENSIONS [inches]

Catalog #	Thread	A	B	C
XDBH2	½ NPT	½ NPT	⅞ HEX	1 ¼

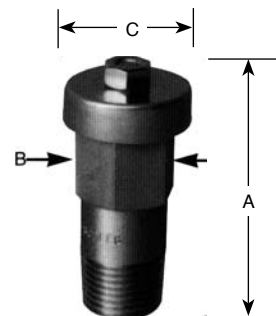
Certifications

Class I, Groups A, B, C & D
Class II, Groups E, F & G
Class III

UL Standard 886
CSA Standard C22.2 No. 30
ATEX EExd IIB DEMKO
00E.004127U
(when installed in XCEX & XJ_X enclosures)



XDB2



XDBH2

Type Bd Series

FEATURES

- Allows the air inside an 'Ex d' Flameproof or Class I, Div 1 enclosure to breathe with the surrounding atmosphere.
- Allows any moisture that enters the enclosure to drain while maintaining the overall integrity of the installation.

PART NUMBER BUILD **Bd 20 N NT**

BASE CATALOG NUMBER

THREAD DESIGNATION

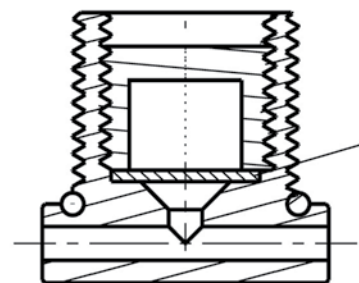
Metric	NPT	NPS	ISO	ISO	ET	PG
20	½	½S	½P	½T	¾E	13
25	¾	¾S	¾P	¾T	1E	16P

O-RING

Nitrile (std.) - NT
Silicone - SC

MATERIAL

Nickel Plated Brass - N
316 Stainless Steel - S



Bd Series

Certifications

Class I, Div 1 Groups A, B, C & D
AExd IIC / AExe II Class I, Zone 1

II 2 GD Exd IIC/Exe II Category 2 & 3
CSA Standard C22.2 No. 30

